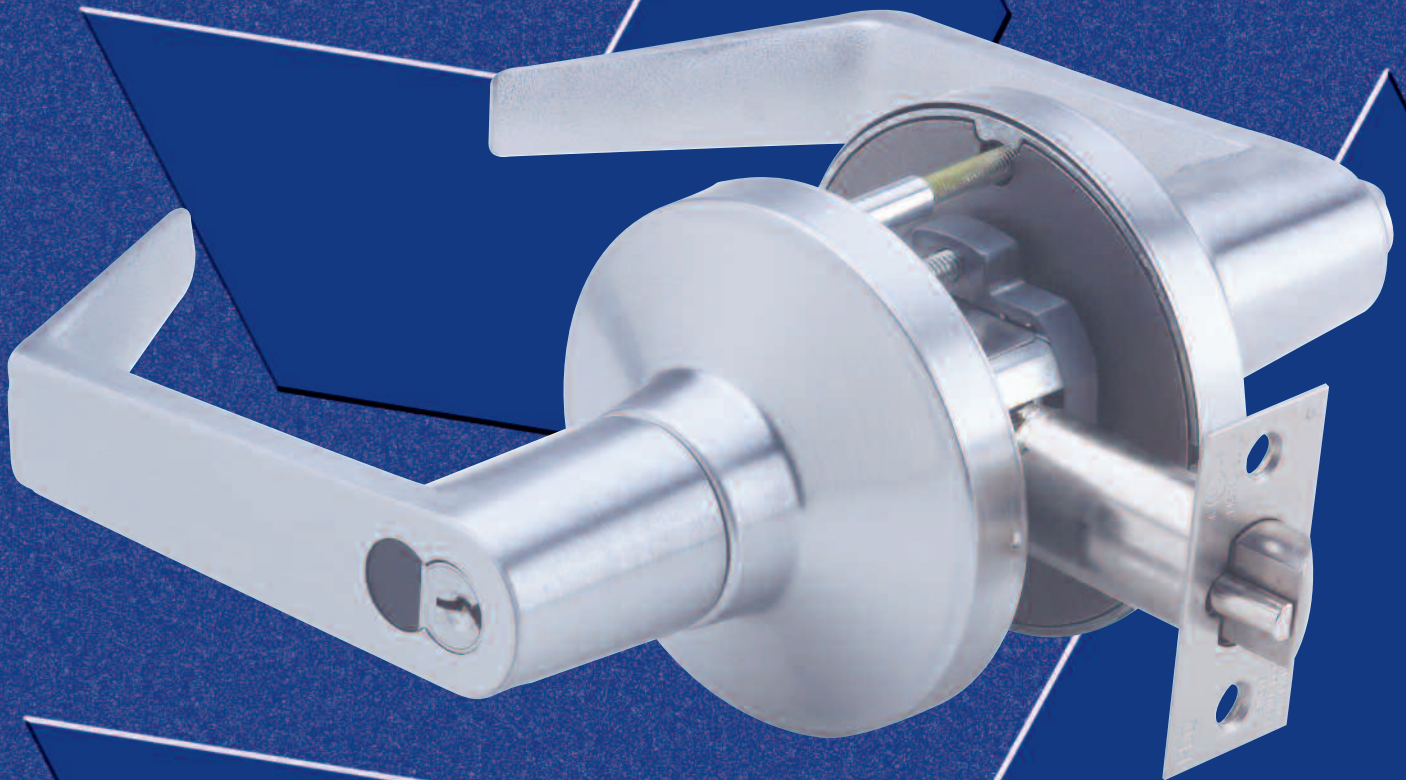


GP Series

Spirit Locks



GP SERIES SPIRIT

HEAVY DUTY

GRADE 2 SERIES

SUGGESTED ARCHITECTURAL SPECIFICATIONS

Lockset will be GP Series *SPIRIT* from PDQ Industries, Inc., Leola, Pennsylvania, assembled in the U.S.A., with a eight-year manufacturer's limited warranty, and be certified to ANSI/BHMA A156.2-2003, Series 4000, Grade 2. Windstorm Resistant Product Listed - ANSI A250.13-2003, ASTM E1886-02, ASTM E330-02. Outswing: 350 ft-lbs., Inswing: N/R, Design Load Rating: 685 lbf. Locksets shall be listed by U.L./U.L.C. for ratings of "A" (3 hours) label and less, for single doors up to 4'0" x 8'0". U.L. 10C/UBC 7-2

(1997) Positive Pressure Rated and U.L. 10B Neutral Pressure Rated. Levers to be solid cast, with no plastic inserts, minimum 5-1/2" in overall length with supportive spring power totally independent of chassis or latch unit. Lockset to be fully adjustable for 1-3/8" to 1-3/4" doors. Positive lever stop is to be totally independent of chassis or latch mechanism. Lockset fasteners to be concealed with through-the-door through-bolt attachment outside the 2-1/8" door prep, **exceeds 1600 in lbs. of torque resistance.**

SPECIFICATIONS – GP Series

FOR DOORS:	1-3/8" to 1-3/4" thick. Factory adjusted for 1-3/4".
DOOR PREP:	Fits standard 161 door prep. Through-door thru-bolting.
BACKSET:	2-3/4", 2-3/8", 5".
CASE:	Heavy duty zinc diecast, investment cast and stainless steel mechanism.
FRONT:	Stainless steel or wrought brass. 2-1/4" x 1-1/8". Beveled 1/8" on 2".
ROSE:	3-3/8" diameter.
STRIKE:	4-7/8" x 1-1/4" (ASA). "T" or "FL" Strike optional. Stainless steel or wrought brass.
LATCHBOLT:	1/2" throw. Adjustable front for flat or beveled doors.
HAND:	Non-handed.
TRIM:	PHL, BSN or MIA levers are solid zinc diecast. 65° lever rotation. Wrought brass roses. Concealed screws. Levers are also available for Large Format IC Core. Contact Customer service for more information.
KEYS:	Two (2) change keys per lock.
KEYWAYS:	Available in keyways of most major manufacturers.
INTERCHANGEABLE CORE:	Available for all keyed functions. 6 or 7 pin.
CYLINDER:	Brass 6-pin cylinder keyed to 5 pins.
KEYING:	Can be MK, CMK, GMK. Available Zero Bitted (K0), Keyed Different (KD), Keyed Alike (KA). Can be keyed into existing masterkey systems of other manufacturers.
FINISHES:	US3(605), US4(606), US10(612), US10B(613), US26(625), US26D(626).
CERTIFICATIONS:	<ul style="list-style-type: none"> ▶ BHMA Certified Product ANSI/BHMA A156.2-2003, Series 4000, Grade 2. Windstorm Resistant Product Listed - ANSI A250.13-2003, ASTM E1886-02, ASTM E330-02, Outswing: 350 ft-lbs., Inswing: N/R, Design Load Rating: 685 lbf. ▶ Meets all accessibility requirements of the ADA. ▶ U.L./U.L.C. Listed for "A" label (3 hour) single swing doors (4'0" x 8'0"). ▶ U.L. 10C/UBC 7-2 (1997) Positive Pressure Rated. ▶ U.L. 10B Neutral Pressure Rated. ▶ Exceeds 1600 in. lbs. of torque resistance.
WARRANTY:	Eight-year limited warranty.
COUNTRY OF ORIGIN:	Assembled in the U.S.A. with U.S. and foreign material. Meets the requirements of the Buy American Act.

GP SERIES SPIRIT



CYLINDERS FOR SPIRIT GP SERIES

PDQ cylinders and plugs are designed to interface with the keyways of most major lock manufacturers. Insert cylinders are designed to accept 6 pins and are combined for 5 pins. These cylinders are shipped with two keys. Interchangeable core cylinders are available combined or uncombined for 6 and 7 pins and must be specified when ordering. Available in two finishes — US4(606) and US26D(626); specify when ordering separately.

Spirit Series
Interchangeable core cylinder

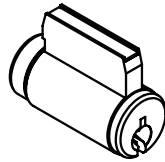


Spirit Series
standard insert cylinder
for 1-3/8" to 1-3/4" doors

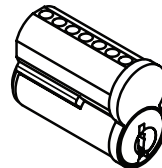


HIGH SECURITY CORES

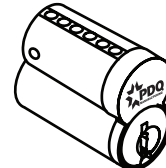
Also available w/a patented high security keyway in Standard, SFIC and LFIC configurations. (LFIC requires Large Format Lever)



Combination Core



IC Core



LFIC Core

GP STRIKES

All PDQ series locks are reversible and shipped with screws. Specify required strike when ordering by defining door frame.

"T" Strike Square Corners*
1-1/8" x 2-3/4" x 3/32"



"ASA" Strike*
1-1/4" x 4-7/8" x 3/32"



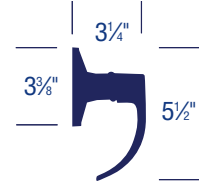
"Full Lip" Strike*
1-5/8" x 2-1/4" x 3/32"



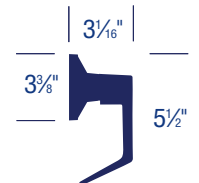
*Not to scale

BORED LOCKS

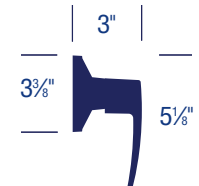
GP BSN



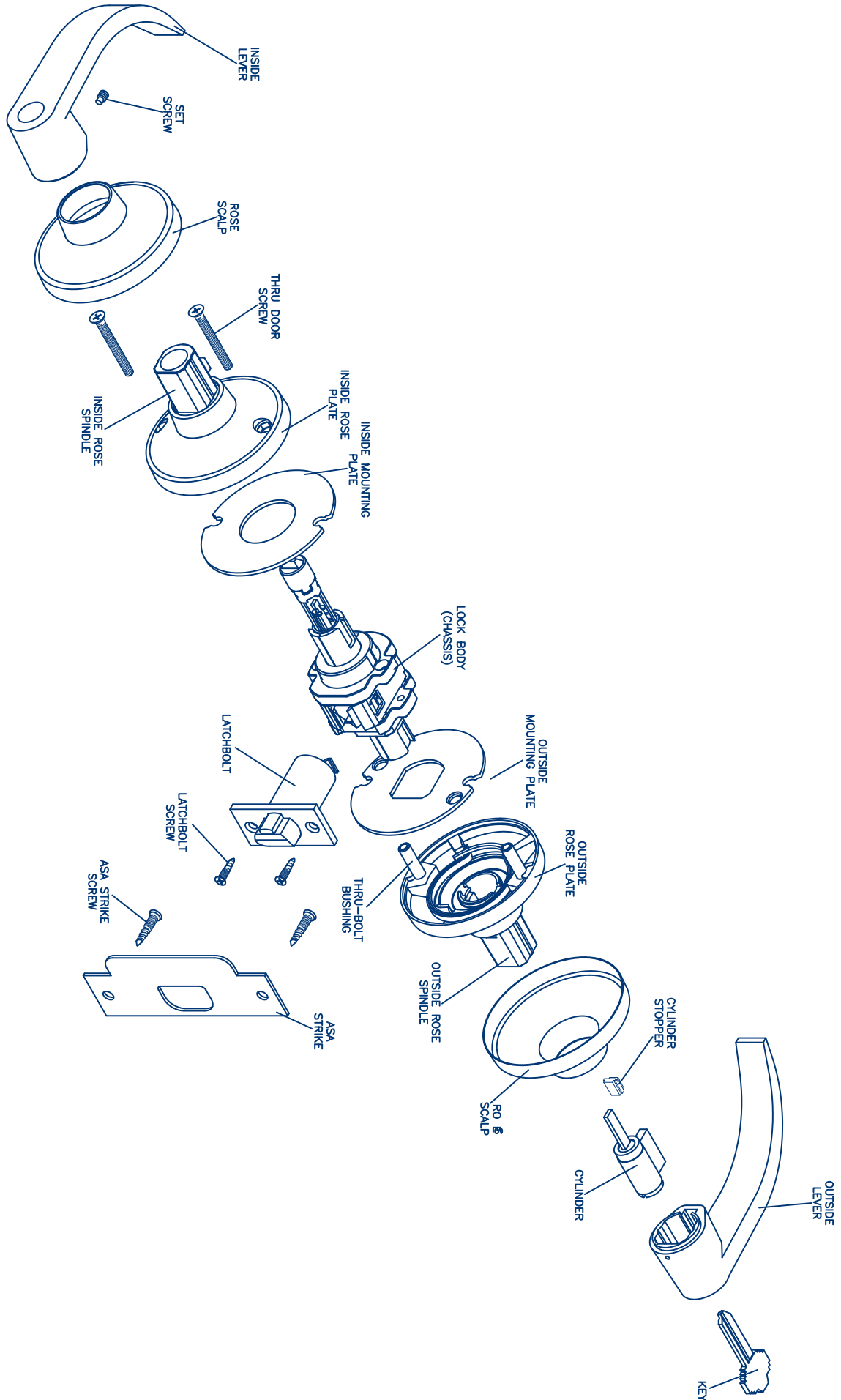
GP PHL



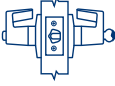
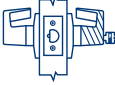
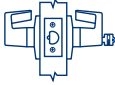
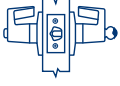

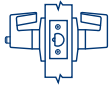


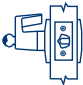


GP MIA



EXPLODED VIEW OF GP SERIES LOCK



GP SERIES SPIRIT HEAVY DUTY GRADE 2 FUNCTION CHART

FUNCTION	FUNCTION NO.	INSIDE	OUTSIDE	FUNCTION DESCRIPTION	ANSI NO.
Entrance	GP 116			<ul style="list-style-type: none"> Latchbolt operated by lever from either side or key in outside lever Outside lever locked by push/turn button on inside When outside lever is locked by push button on inside – key from outside, or rotating inside lever unlocks outside lever When outside lever is locked by pushing and turning the button on the inside, key from outside or rotating inside lever retracts latch but does not unlock outside lever Deadlocking (guarded) latchbolt 	F81
Storeroom	GP 115			<ul style="list-style-type: none"> Latchbolt operated by inside lever or key in outside lever Outside lever always fixed Deadlocking (guarded) latchbolt 	F86
Classroom	GP 148			<ul style="list-style-type: none"> Latchbolt operated by lever from either side Outside lever locked by key from outside Outside lever unlocked by key from outside Inside lever always operates latch Deadlocking (guarded) latchbolt 	F84
Entry	GP 182			<ul style="list-style-type: none"> Latchbolt operated by lever from either side or key in outside lever Outside lever locked by push button on inside Outside lever unlocked by key from outside, or rotating inside lever Deadlocking (guarded) latchbolt 	F82
Passage	GP 126			<ul style="list-style-type: none"> Latchbolt operated by lever from either side at all times 	F75
Privacy Bedroom Bathroom	GP 176			<ul style="list-style-type: none"> Latchbolt operated by lever from either side or emergency release in outside lever Outside lever locked by push button on inside Outside lever unlocked by emergency release from outside, rotating inside lever, or closing door 	F76
General Entry	GP 137			<ul style="list-style-type: none"> Latchbolt operated by lever from either side Both levers locked by key from either side Both levers unlocked by key from either side Deadlocking (guarded) latchbolt 	F91
Communicating	GP 125			<ul style="list-style-type: none"> Latchbolt operated by inside lever Blank plate outside Minimum clearance of 1-1/2" between doors Frame depth 7-1/8" Deadlocking (guarded) latchbolt 	
Exit or Twin Communicating	GP 150			<ul style="list-style-type: none"> Latchbolt operated by inside lever Blank plate outside Inside lever locked by key inside Inside lever unlocked by key inside Minimum clearance of 1-1/2" between doors Use only in rooms with more than one exit Frame depth 7-1/8" Deadlocking (guarded) latchbolt 	
Double Dummy	GP 205			<ul style="list-style-type: none"> Pull lever both sides No mechanical operation 	
Single Dummy	GP 211			<ul style="list-style-type: none"> Pull lever one side No mechanical operation 	



PO Box 507 2754 Creek Hill Road Leola PA 17540
800 441 9692 • 717 656 4281 • 717 656 6892 Fax
www.pdqlocks.com

PDQ'S GP Series Brochures are now printed entirely on Forest Stewardship Council™ certified paper. FSC Certification ensures that the paper used in this catalog contains fiber from well-managed and responsibly harvested forests that meet strict environmental and socioeconomic standards. We're proud to be one of the first hardware manufacturers in the country to make this significant move to help our environment. The FSC logo on our brochure signals not only FSC Certification, but also PDQ's commitment to improving the environment.

