

11 Line Parts Manual



For assistance, contact SARGENT at
800-727-5477 or www.sargentlock.com

Experience a safer
and more open world

⚠ WARNING

This product can expose you to lead which is known to the state of California to cause cancer and birth defects or other reproductive harm. For more information go to www.P65warnings.ca.gov.

Select Functions Discontinued May 1, 2025. Please Contact the
Factory for Parts Availability.

Table of Contents2

11G04 Storeroom or Closet3

11G05 Entrance or Office4

11G24 Entrance or Office5

11G37 Classroom6

11G44 Service Station7

11G50 Hotel, Dormitory or Apartment8

11G54 Corridor9

11G16 Classroom, Security, Apartment, Exit, Privacy10

11G17 Utility, Asylum or Institutional11

11G30 Communicating12

11G38 Classroom Security Intruder13

11G13 Exit14

11U15 Passage15

11G15-3 Exit or Communicating16

11U65 Privacy/Bathroom17

11U68 Hospital Privacy18

11U93 Single Lever Pull19

11U94 Double Lever Pull20

11U94-2 Double Lever Pull21

Sleeve Assemblies 22-24

Bearing and Lock Body Assemblies25

Latch Assemblies26

Standard Levers and Components27

Rose Assemblies28

Strikes29

Cylinders30

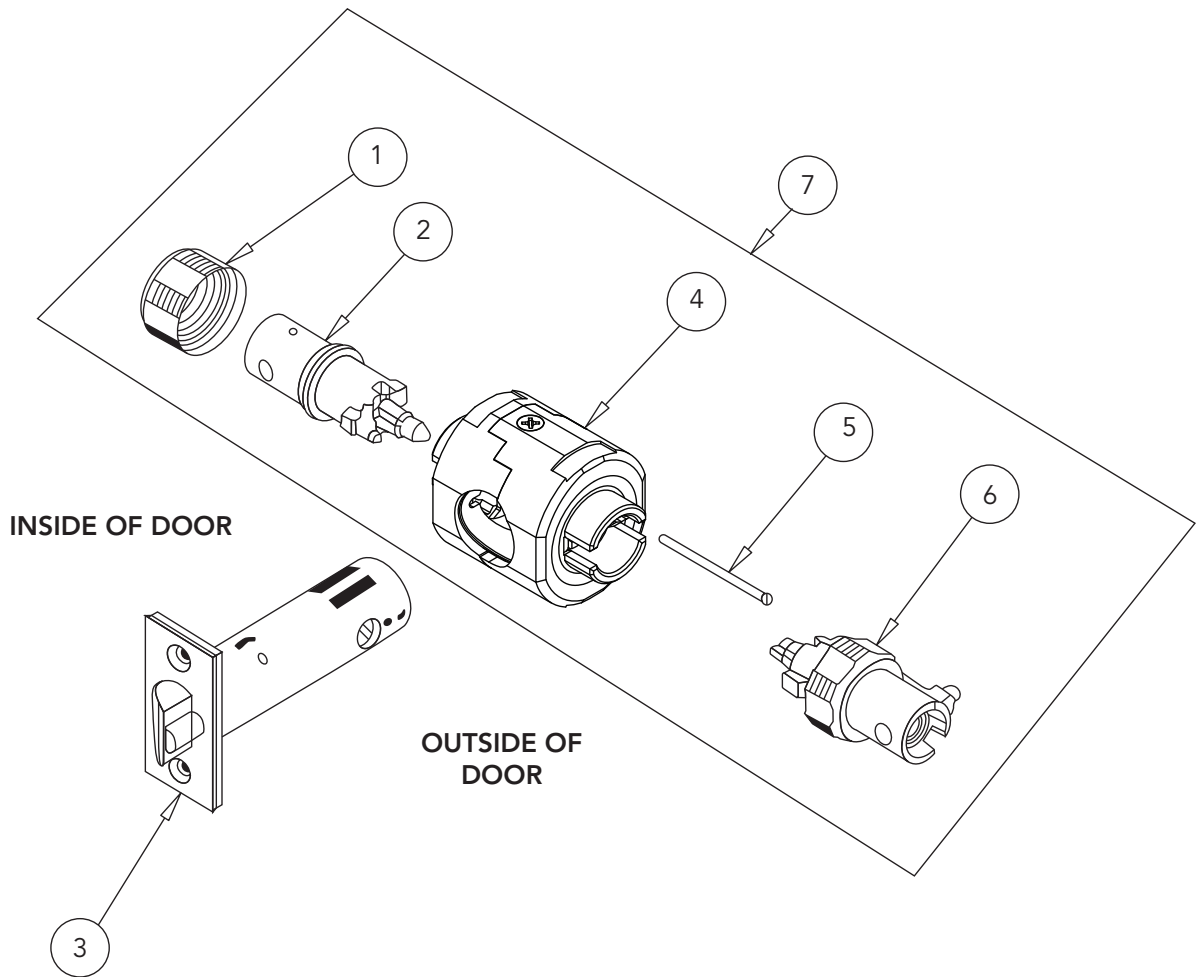
Miscellaneous Parts31

Item	Part Number	Description	Quantity
1	11-0031	Inside Collar	1
2	11-2151	Non-Locking Sleeve Assembly	1
3	*11-2106	Latch Assembly, B	1
4	11-2899	Bearing Assembly	1
5	11-0394	Aligning Pin	1
6	11-2009	Locking Sleeve Assembly	1
7	11-2294	Lock Body Assembly	1

* Specify Finish

Notes:

- Part numbers listed are for 1-3/4" thick doors. Consult factory for part numbers associated with non-standard doors.
- Part numbers listed are for standard cylinder and latch configurations. For other options, see pages 22-26.
- For lever and rose options, see pages 27-28.



The warranty on SARGENT® products becomes void if the product is modified in any way, regardless of whether the modification causes or contributes to any alleged defect. If a SARGENT product is modified it may no longer meet industry certification and quality control standards applicable to the original product and is no longer a genuine SARGENT product.

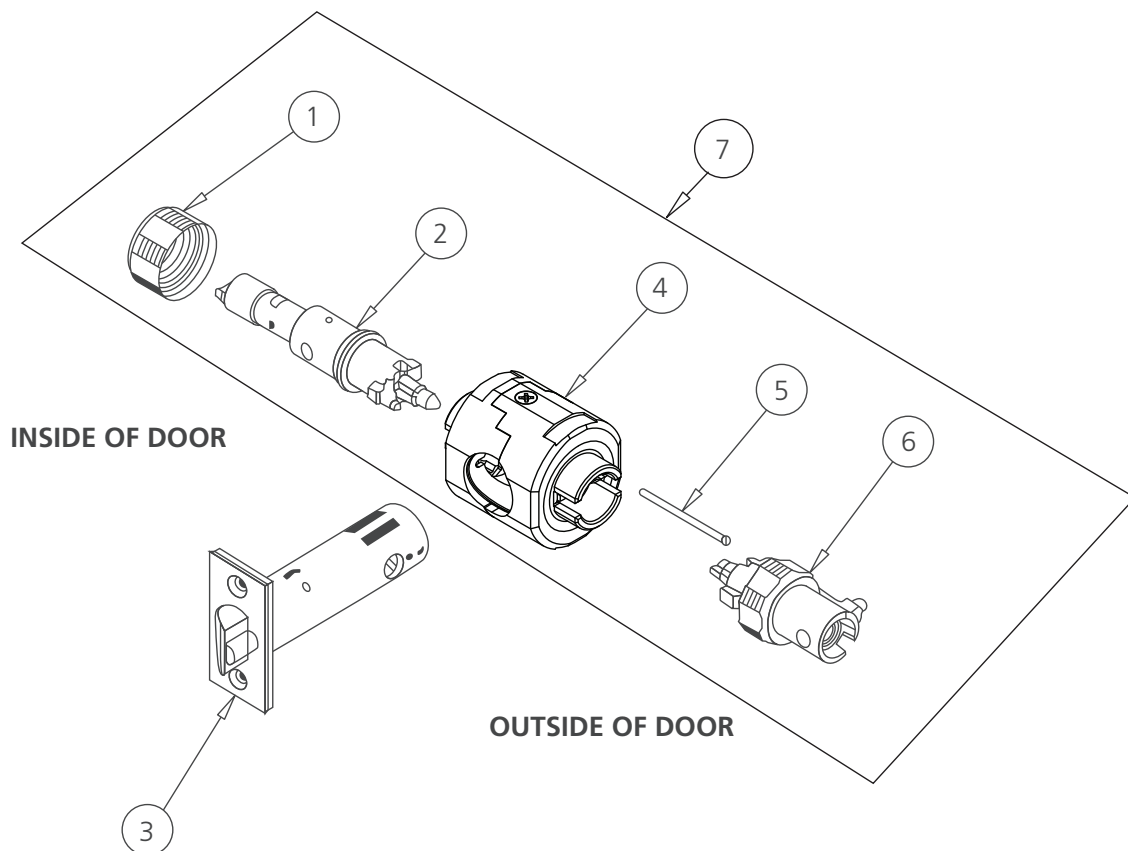
Copyright © 2018-2025 Sargent Manufacturing Company, an ASSA ABLOY Group company. All rights reserved. Reproduction in whole or in part without the express written permission of Sargent Manufacturing Company is prohibited.

Item	Part Number	Description	Quantity
1	11-0031	Inside Collar	1
2	*11-2152	Non-Locking Sleeve Assembly	1
3	*11-2106	Latch Assembly, B	1
4	11-2899	Bearing Assembly	1
5	11-0394	Aligning Pin	1
6	11-2009	Locking Sleeve Assembly	1
7	11-2295	Lock Body Assembly	1

* Specify Finish

Notes:

- Part numbers listed are for 1-3/4" thick doors. Consult factory for part numbers associated with non-standard doors.
- Part numbers listed are for standard cylinder and latch configurations. For other options, see pages 22-26.
- For lever and rose options, see pages 27-28.

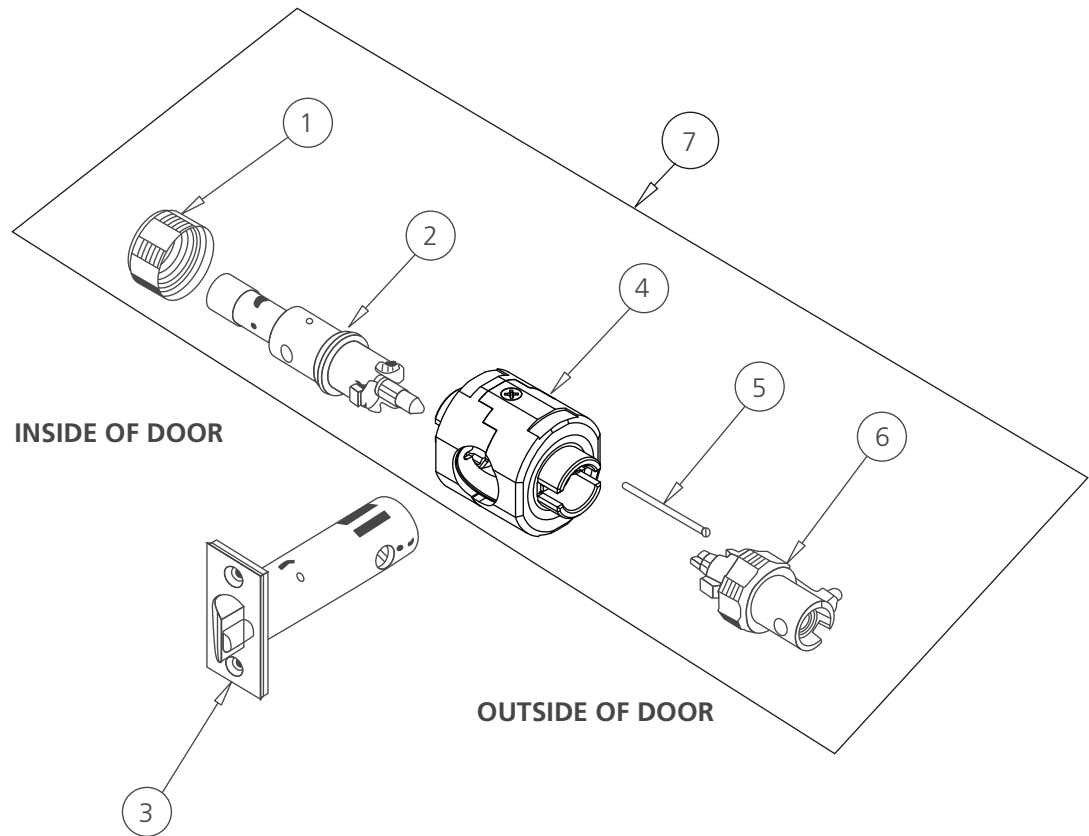


This Function Discontinued May 1, 2025. Please Contact the Factory for Parts Availability.

Item	Part Number	Description	Quantity
1	11-0031	Inside Collar	1
2	*11-2157	Non-Locking Sleeve Assembly	1
3	*11-2108	Latch Assembly, K	1
4	11-2899	Bearing Assembly	1
5	11-0394	Aligning Pin	1
6	11-2909	Locking Sleeve Assembly	1
7	11-2301	Lock Body Assembly	1

* Specify Finish

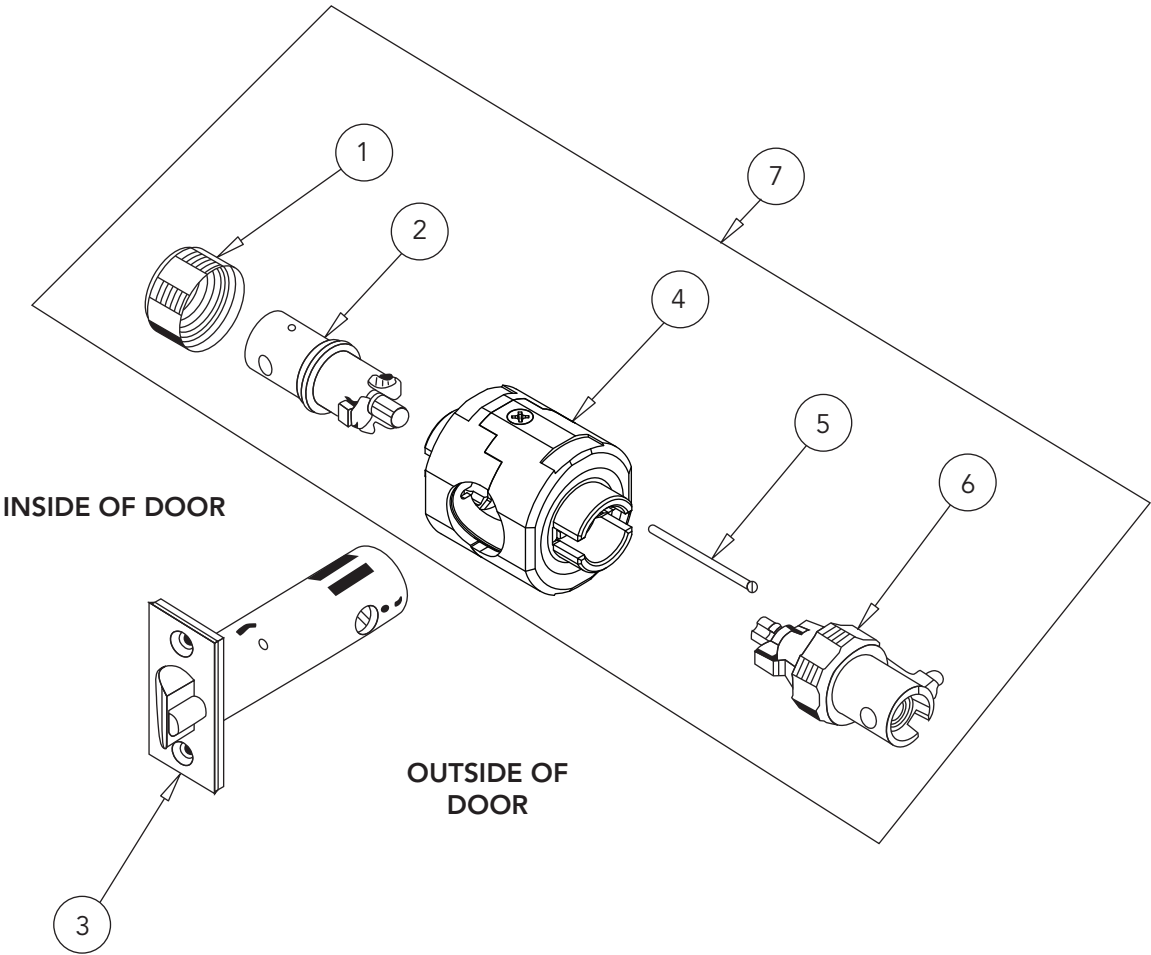
- Notes:
- Part numbers listed are for 1-3/4" thick doors. Consult factory for part numbers associated with non-standard doors.
 - Part numbers listed are for standard cylinder and latch configurations. For other options, see pages 22-26.
 - For lever and rose options, see pages 27-28.



Item	Part Number	Description	Quantity
1	11-0031	Inside Collar	1
2	11-2153	Locking Sleeve Assembly	1
3	*11-2106	Latch Assembly, B	1
4	11-2899	Bearing Assembly	1
5	11-0394	Aligning Pin	1
6	11-2014	Locking Sleeve Assembly	1
7	11-2304	Lock Body Assembly	1

* Specify Finish

- Notes:
- Part numbers listed are for 1-3/4" thick doors. Consult factory for part numbers associated with non-standard doors.
 - Part numbers listed are for standard cylinder and latch configurations. For other options, see pages 22-26.
 - For lever and rose options, see pages 27-28.



The warranty on SARGENT® products becomes void if the product is modified in any way, regardless of whether the modification causes or contributes to any alleged defect. If a SARGENT product is modified it may no longer meet industry certification and quality control standards applicable to the original product and is no longer a genuine SARGENT product.

Copyright © 2018-2025 Sargent Manufacturing Company, an ASSA ABLOY Group company. All rights reserved. Reproduction in whole or in part without the express written permission of Sargent Manufacturing Company is prohibited.

Experience a safer
and more open world

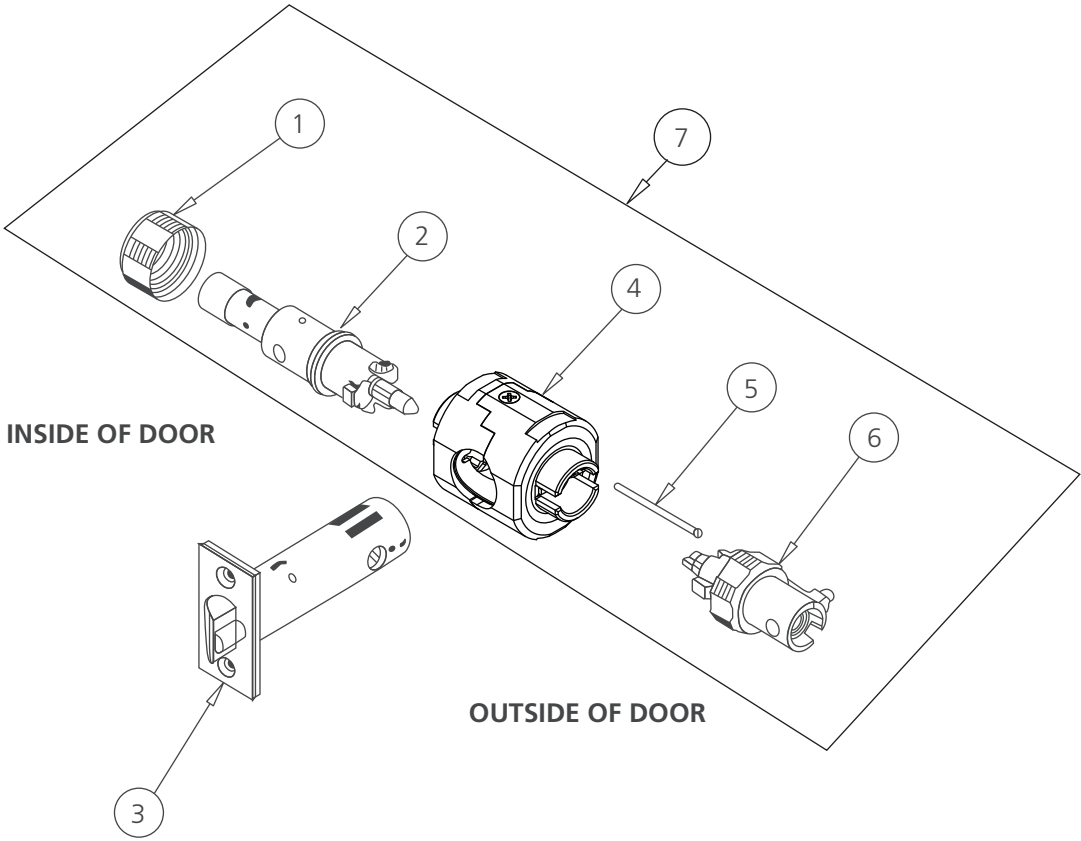
This Function Discontinued May 1, 2025. Please Contact the Factory for Parts Availability.

Item	Part Number	Description	Quantity
1	11-0031	Inside Collar	1
2	*11-2154	Non-Locking Sleeve Assembly	1
3	*11-2110	Latch Assembly, D	1
4	11-2899	Bearing Assembly	1
5	11-0394	Aligning Pin	1
6	11-2009	Locking Sleeve Assembly	1
7	11-2305	Lock Body Assembly	1

* Specify Finish

Notes:

- Part numbers listed are for 1-3/4" thick doors. Consult factory for part numbers associated with non-standard doors.
- Part numbers listed are for standard cylinder and latch configurations. For other options, see pages 22-26.
- For lever and rose options, see pages 27-28.



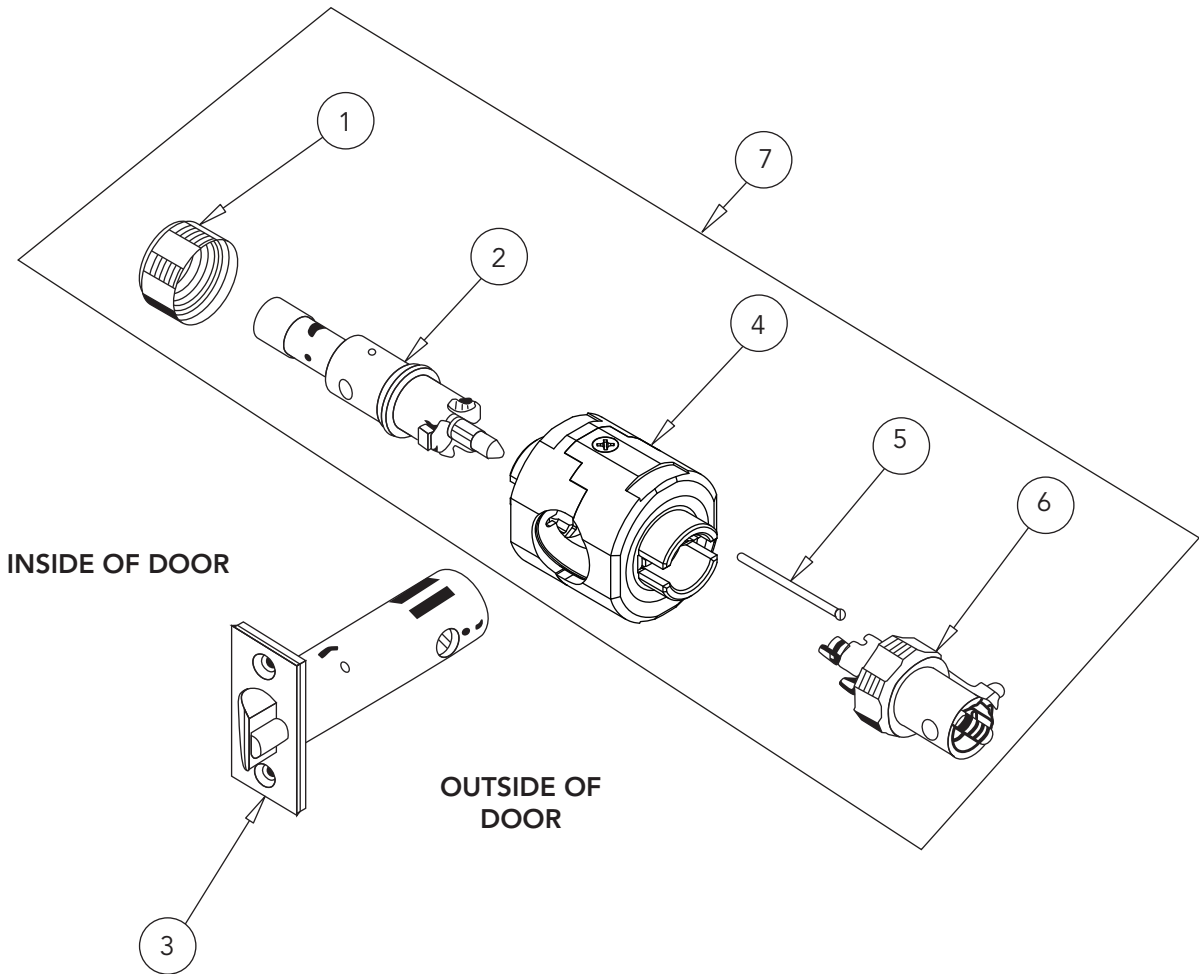
This Function Discontinued May 1, 2025. Please Contact the Factory for Parts Availability.

Item	Part Number	Description	Quantity
1	11-0031	Inside Collar	1
2	*11-2155	Non-Locking Sleeve Assembly	1
3	*11-2110	Latch Assembly, D	1
4	11-2899	Bearing Assembly	1
5	11-0394	Aligning Pin	1
6	11-2016	Locking Sleeve Assembly	1
7	11-2306	Lock Body Assembly	1

* Specify Finish

Notes:

- Part numbers listed are for 1-3/4" thick doors. Consult factory for part numbers associated with non-standard doors.
- Part numbers listed are for standard cylinder and latch configurations. For other options, see pages 22-26.
- For lever and rose options, see pages 27-28.



The warranty on SARGENT® products becomes void if the product is modified in any way, regardless of whether the modification causes or contributes to any alleged defect. If a SARGENT product is modified it may no longer meet industry certification and quality control standards applicable to the original product and is no longer a genuine SARGENT product.

Copyright © 2018-2025 Sargent Manufacturing Company, an ASSA ABLOY Group company. All rights reserved. Reproduction in whole or in part without the express written permission of Sargent Manufacturing Company is prohibited.

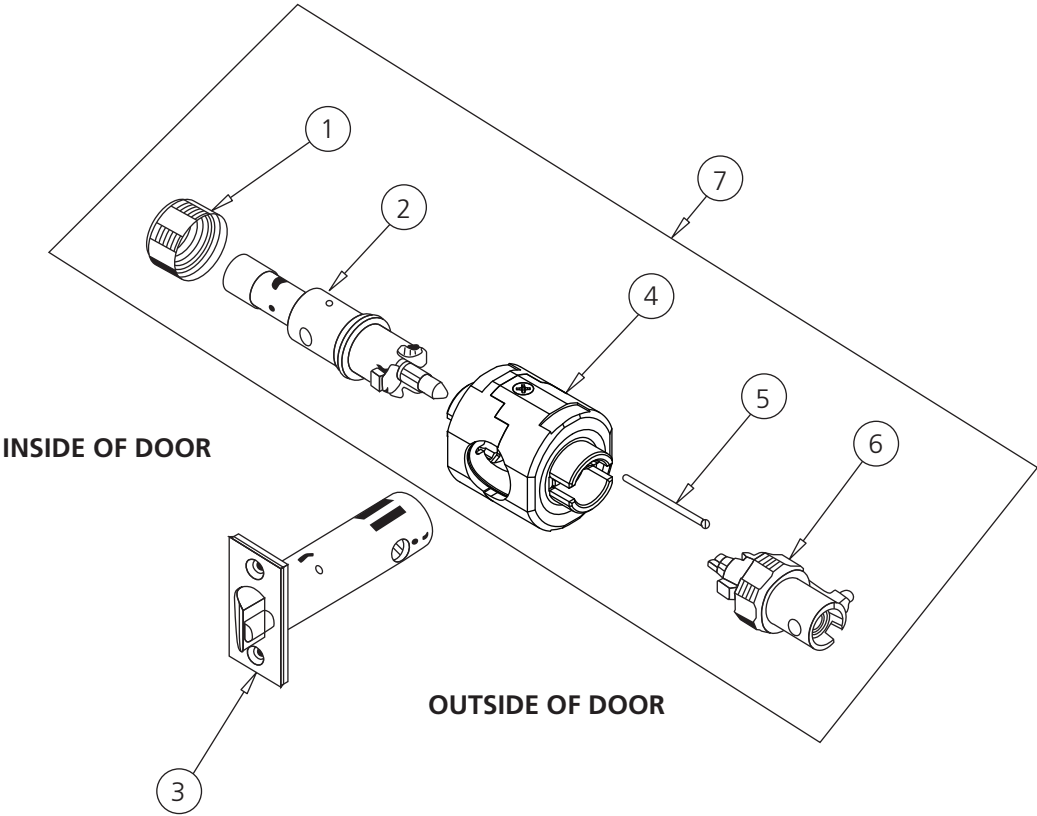
This Function Discontinued May 1, 2025. Please Contact the Factory for Parts Availability.

Item	Part Number	Description	Quantity
1	11-0031	Inside Collar	1
2	*11-2156	Non-Locking Sleeve Assembly	1
3	*11-2110	Latch Assembly, D	1
4	11-2899	Bearing Assembly	1
5	11-0394	Aligning Pin	1
6	11-2017	Locking Sleeve Assembly	1
7	11-2307	Lock Body Assembly	1

* Specify Finish

Notes:

- Part numbers listed are for 1-3/4" thick doors. Consult factory for part numbers associated with non-standard doors.
- Part numbers listed are for standard cylinder and latch configurations. For other options, see pages 22-26.
- For lever and rose options, see pages 27-28.

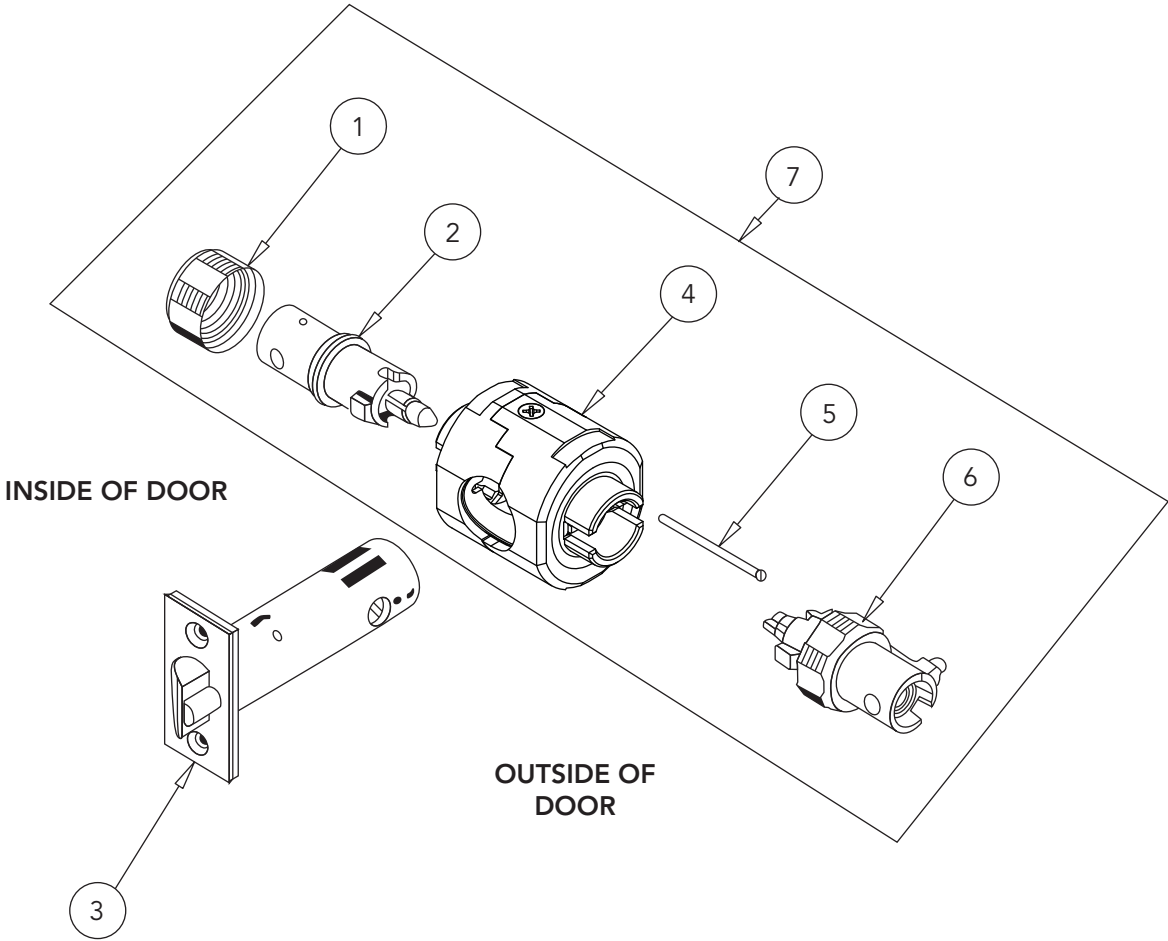


Item	Part Number	Description	Quantity
1	11-0031	Inside Collar	1
2	11-2011	Locking Sleeve Assembly	1
3	*11-2106	Latch Assembly, B	1
4	11-2899	Bearing Assembly	1
5	11-0394	Aligning Pin	2
6	11-2009	Locking Sleeve Assembly	1
7	11-2299	Lock Body Assembly	1

* Specify Finish

Notes:

- Part numbers listed are for 1-3/4" thick doors. Consult factory for part numbers associated with non-standard doors.
- Part numbers listed are for standard cylinder and latch configurations. For other options, see pages 22-26.
- For lever and rose options, see pages 27-28.



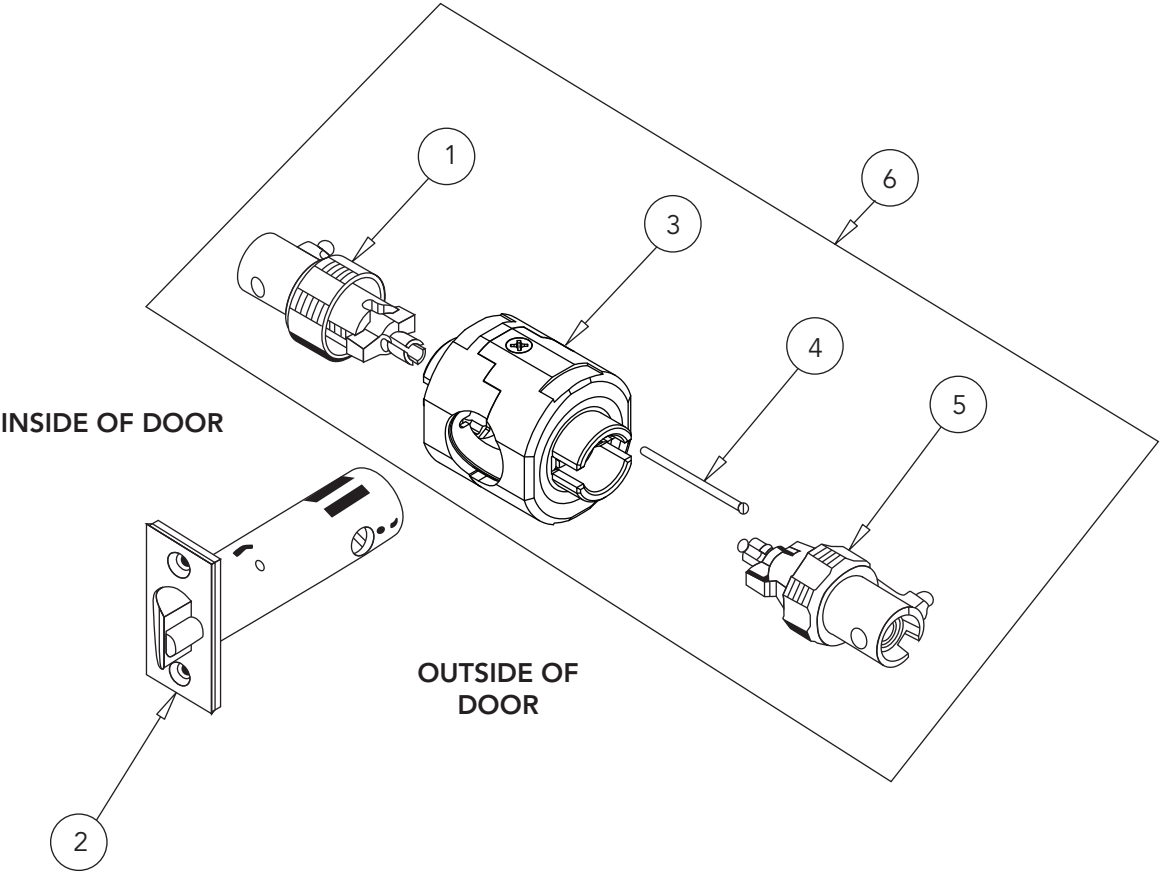
This Function Discontinued May 1, 2025. Please Contact the Factory for Parts Availability.

Item	Part Number	Description	Quantity
1	11-2013	Locking Sleeve Assembly	1
2	*11-2106	Latch Assembly, B	1
3	11-2899	Bearing Assembly	1
4	11-0394	Aligning Pin	1
5	11-2012	Locking Sleeve Assembly	1
6	11-2300	Lock Body Assembly	1

* Specify Finish

Notes:

- Part numbers listed are for 1-3/4" thick doors. Consult factory for part numbers associated with non-standard doors.
- Part numbers listed are for standard cylinder and latch configurations. For other options, see pages 22-26.
- For lever and rose options, see pages 27-28.



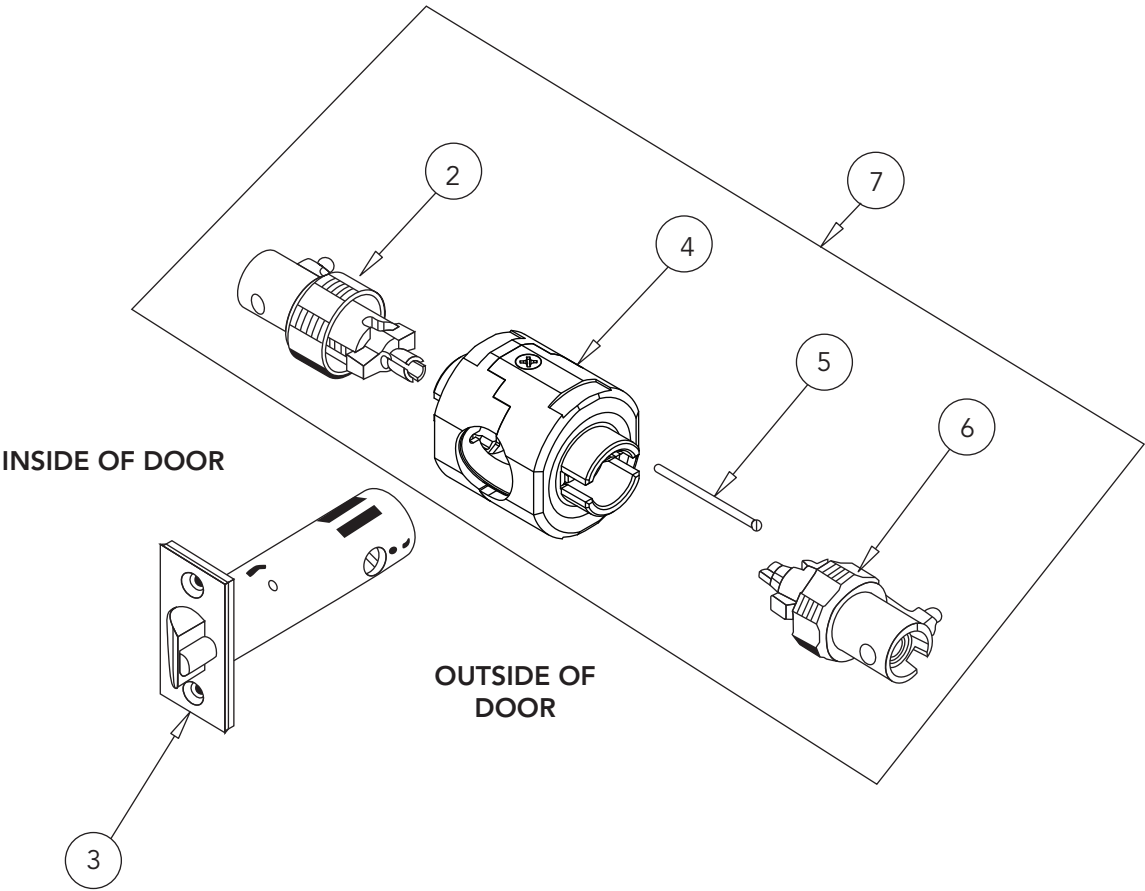
This Function Discontinued May 1, 2025. Please Contact the Factory for Parts Availability.

Item	Part Number	Description	Quantity
2	11-2015	Locking Sleeve Assembly	1
3	*11-2106	Latch Assembly, B	1
4	11-2001	Bearing Assembly	1
5	11-0394	Aligning Pin	2
6	11-2014	Locking Sleeve Assembly	1
7	11-2303	Lock Body Assembly	1

* Specify Finish

Notes:

- Part numbers listed are for 1-3/4" thick doors. Consult factory for part numbers associated with non-standard doors.
- Part numbers listed are for standard cylinder and latch configurations. For other options, see pages 22-26.
- For lever and rose options, see pages 27-28.

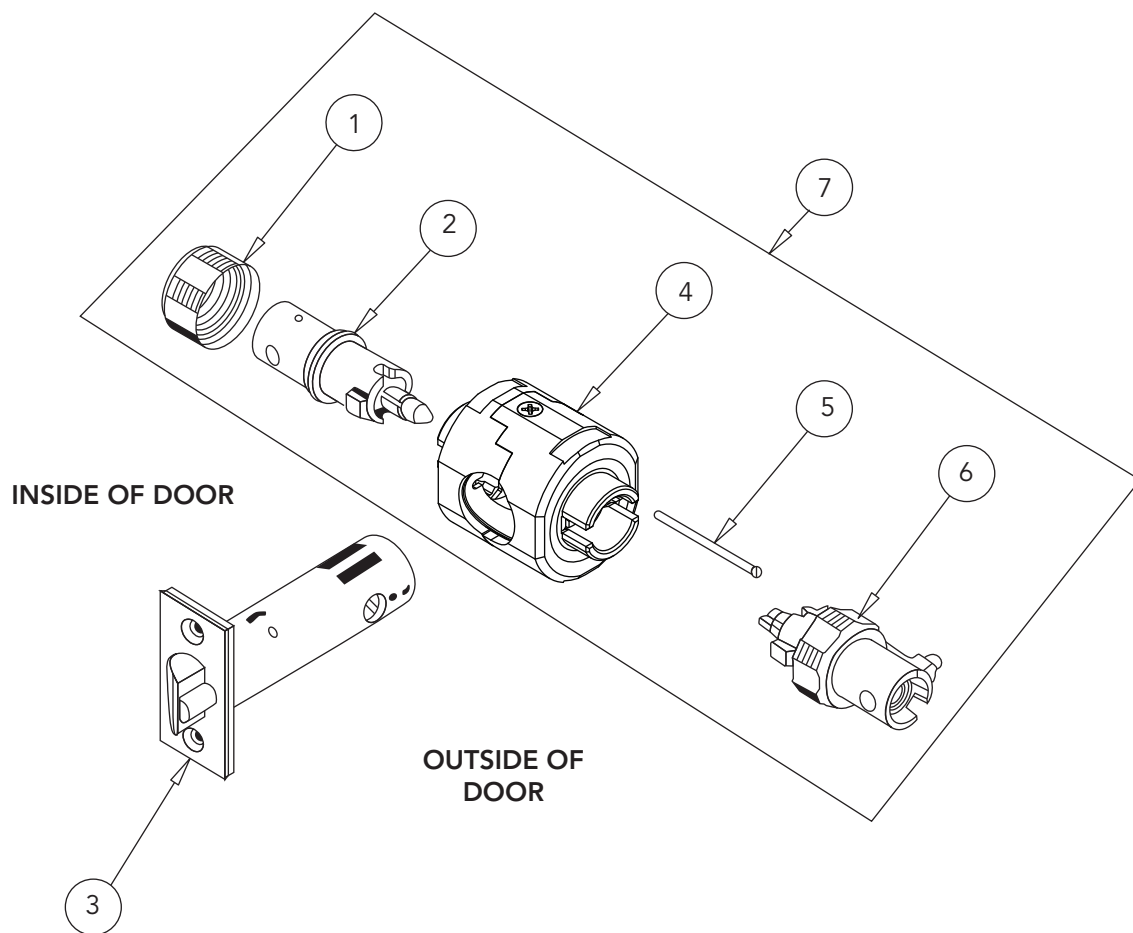


Item	Part Number	Description	Quantity
1	11-0031	Inside Collar	1
2	11-2011	Non-Locking Sleeve Assembly	1
3	*11-2106	Latch Assembly, B	1
4	11-2899	Bearing Assembly	1
5	11-0394	Aligning Pin	2
6	11-2017	Locking Sleeve Assembly	1
7	11-2311	Lock Body Assembly	1

* Specify Finish

Notes:

- Part numbers listed are for 1-3/4" thick doors. Consult factory for part numbers associated with non-standard doors.
- Part numbers listed are for standard cylinder and latch configurations. For other options, see pages 22-26.
- For lever and rose options, see pages 27-28.



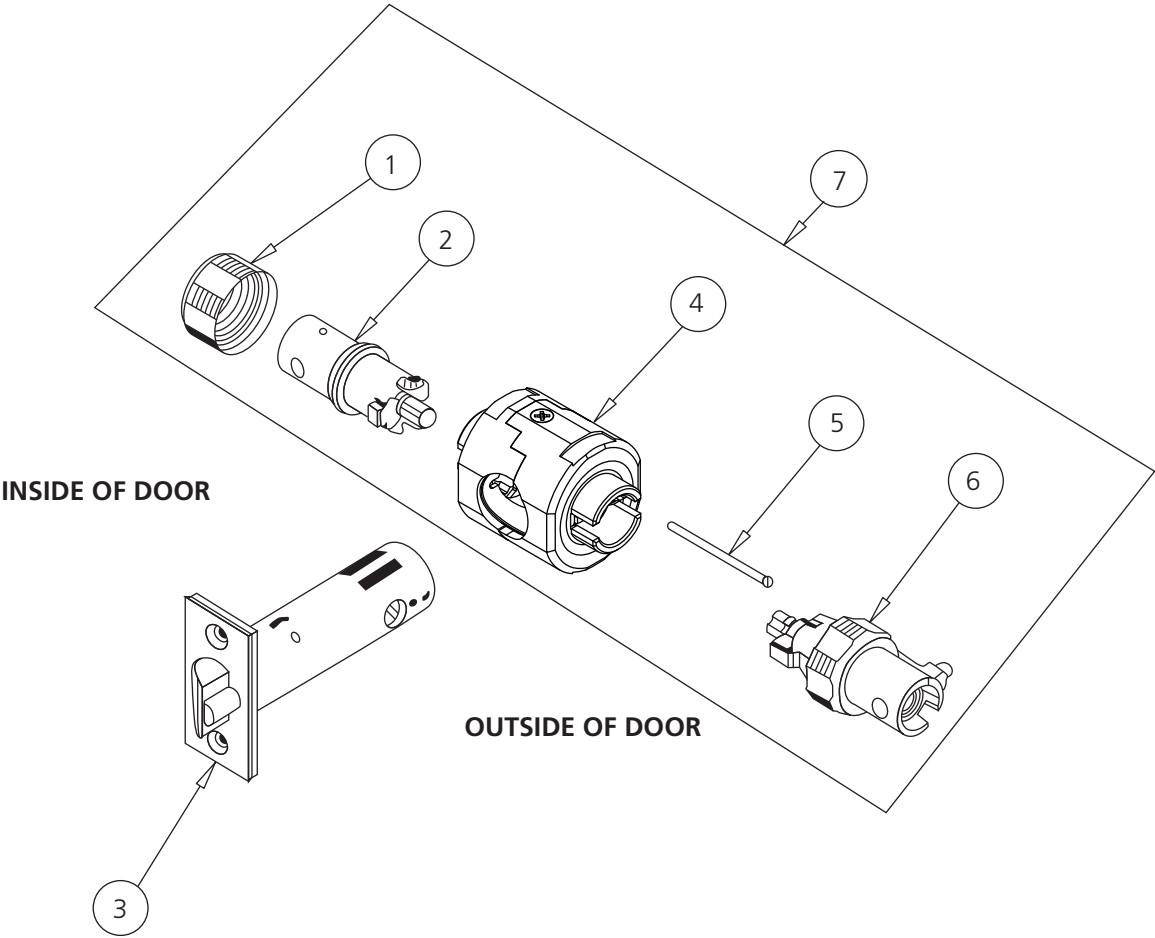
This Function Discontinued May 1, 2025. Please Contact the Factory for Parts Availability.

Item	Part Number	Description	Quantity
1	11-0031	Inside Collar	1
2	11-2151	Non-Locking Sleeve Assembly	1
3	*11-2106	Latch Assembly, B	1
4	11-2899	Bearing Assembly	1
5	11-0394	Aligning Pin	1
6	11-2009	Locking Sleeve Assembly	1
7	11-2296	Lock Body Assembly	1

* Specify Finish

Notes:

- Part numbers listed are for 1-3/4" thick doors. Consult factory for part numbers associated with non-standard doors.
- Part numbers listed are for standard cylinder and latch configurations. For other options, see pages 22-26.
- For lever and rose options, see pages 27-28.



The warranty on SARGENT® products becomes void if the product is modified in any way, regardless of whether the modification causes or contributes to any alleged defect. If a SARGENT product is modified it may no longer meet industry certification and quality control standards applicable to the original product and is no longer a genuine SARGENT product.

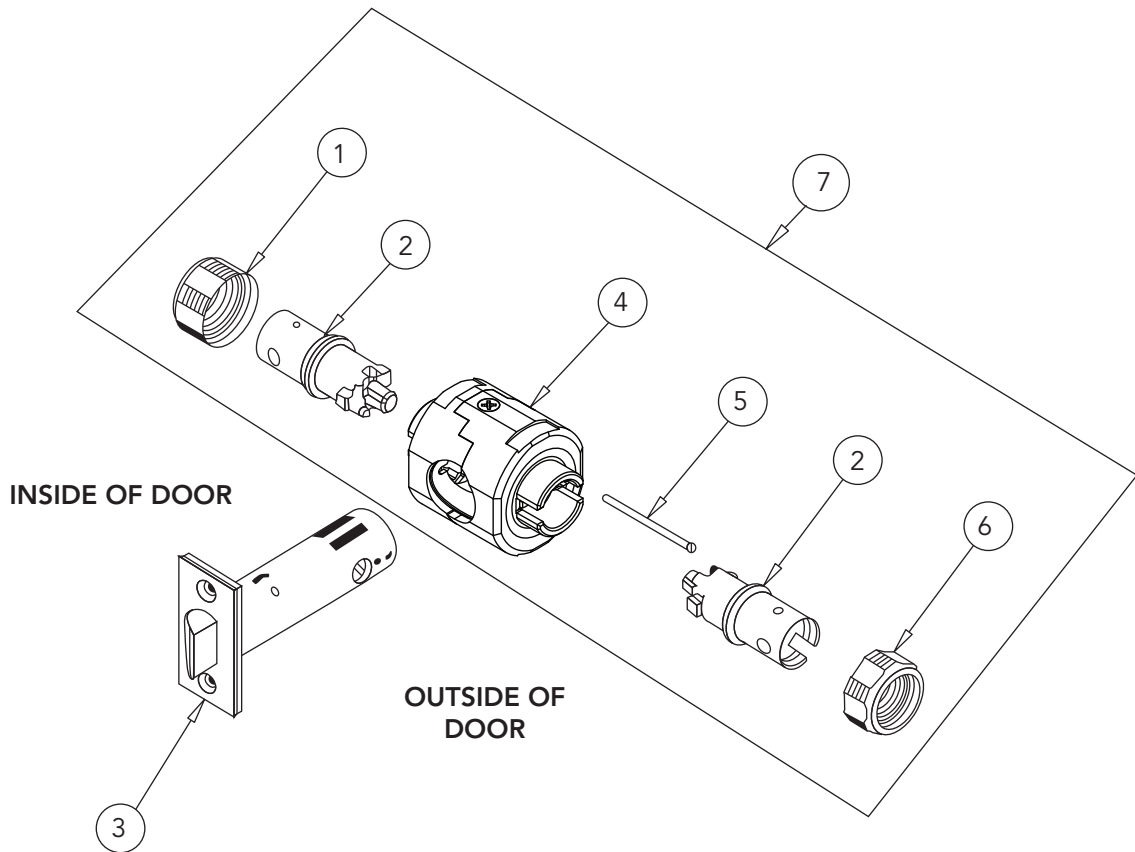
Copyright © 2018-2025 Sargent Manufacturing Company, an ASSA ABLOY Group company. All rights reserved. Reproduction in whole or in part without the express written permission of Sargent Manufacturing Company is prohibited.

Item	Part Number	Description	Quantity
1	11-0031	Inside Collar	1
2	11-2153	Non-Locking Sleeve Assembly	2
3	*11-2107	Latch Assembly, A	1
4	11-2899	Bearing Assembly	1
5	11-0394	Aligning Pin	1
6	11-0032	Outside Collar	1
7	11-2297	Lock Body Assembly	1

* Specify Finish

Notes:

- Part numbers listed are for 1-3/4" thick doors. Consult factory for part numbers associated with non-standard doors.
- Part numbers listed are for standard cylinder and latch configurations. For other options, see pages 22-26.
- For lever and rose options, see pages 27-28.

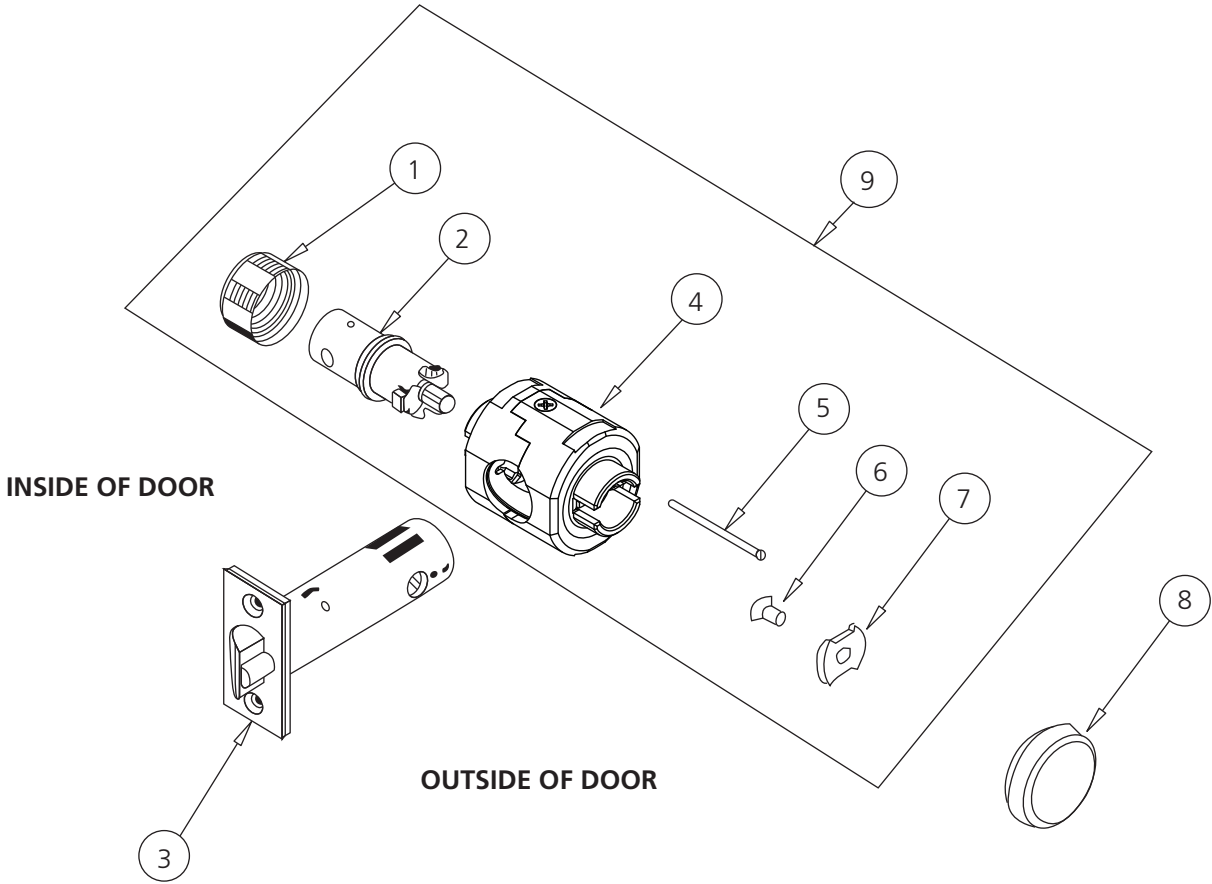


This Function Discontinued May 1, 2025. Please Contact the Factory for Parts Availability.

Item	Part Number	Description	Quantity
1	11-0031	Inside Collar	1
2	11-2153	Non-Locking Sleeve Assembly	1
3	*11-2106	Latch Assembly, B	1
4	11-2899	Bearing Assembly	1
5	11-0394	Aligning Pin	1
6	01-1027	Countersunk Flat Head Screw 10-24 x 3/8" (1-3/4" Door)	1
7	11-0174	Anchor Plate	1
8	N/A	Rosette Plug (Included as Part of Rose Assembly, see page 29)	1
9	11-2298	Lock Body Assembly	1

* Specify Finish

- Notes:
- Part numbers listed are for 1-3/4" thick doors. Consult factory for part numbers associated with non-standard doors.
 - Part numbers listed are for standard cylinder and latch configurations. For other options, see pages 22-26.
 - For lever and rose options, see pages 27-28.



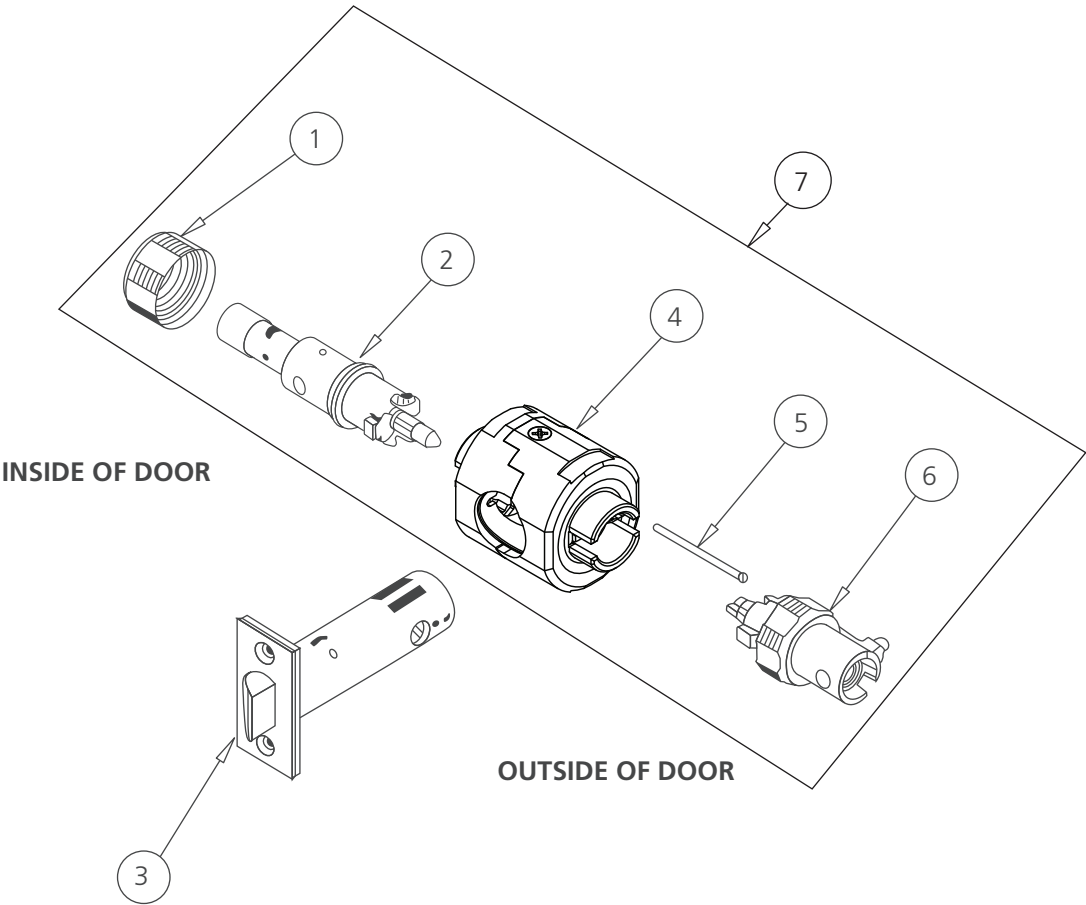
A8252 11/25

Item	Part Number	Description	Quantity
1	11-0031	Inside Collar	1
2	*11-2156	Non-Locking Sleeve Assembly	1
3	*11-2111	Latch Assembly, C	1
4	11-2899	Bearing Assembly	1
5	11-0394	Aligning Pin	1
6	11-2055	Locking Sleeve Assembly	1
7	11-2308	Lock Body Assembly	1

* Specify Finish

Notes:

- Part numbers listed are for 1-3/4" thick doors. Consult factory for part numbers associated with non-standard doors.
- Part numbers listed are for standard cylinder and latch configurations. For other options, see pages 22-26.
- For lever and rose options, see pages 27-28.

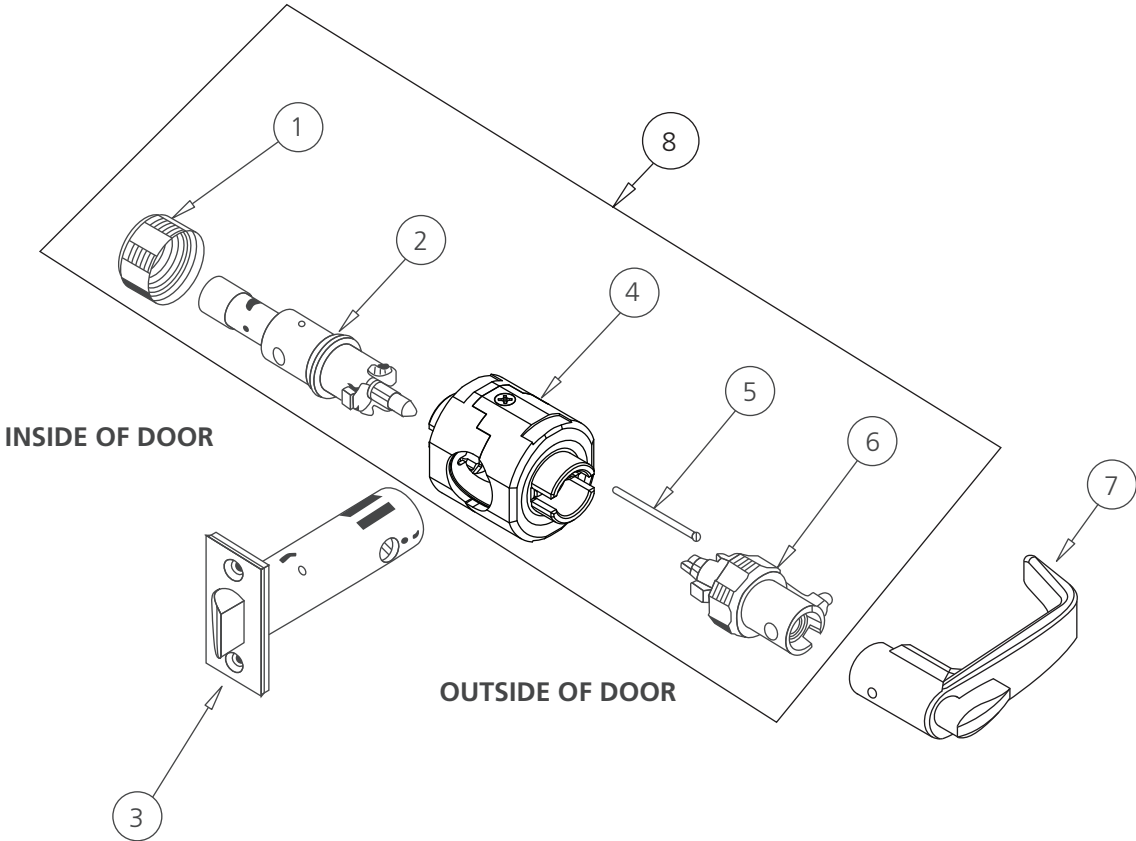


This Function Discontinued May 1, 2025. Please Contact the Factory for Parts Availability.

Item	Part Number	Description	Quantity
1	11-0031	Inside Collar	1
2	*11-2156	Non-Locking Sleeve Assembly	1
3	*11-2111	Latch Assembly, C	1
4	11-2899	Bearing Assembly	1
5	11-0394	Aligning Pin	1
6	11-2055	Locking Sleeve Assembly	1
7	11-4064	Lever/Turnpiece Assembly (B Lever)	1
	11-4065	Lever/Turnpiece Assembly (J Lever)	
	11-4066	Lever/Turnpiece Assembly (L Lever)	
	11-4067	Lever/Turnpiece Assembly (P Lever)	
8	11-2308	Lock Body Assembly	1

* Specify Finish

- Notes:
- Part numbers listed are for 1-3/4" thick doors. Consult factory for part numbers associated with non-standard doors.
 - Part numbers listed are for standard cylinder and latch configurations. For other options, see pages 22-26.
 - For lever and rose options, see pages 27-28.



The warranty on SARGENT® products becomes void if the product is modified in any way, regardless of whether the modification causes or contributes to any alleged defect. If a SARGENT product is modified it may no longer meet industry certification and quality control standards applicable to the original product and is no longer a genuine SARGENT product.

Copyright © 2018-2025 Sargent Manufacturing Company, an ASSA ABLOY Group company. All rights reserved. Reproduction in whole or in part without the express written permission of Sargent Manufacturing Company is prohibited.

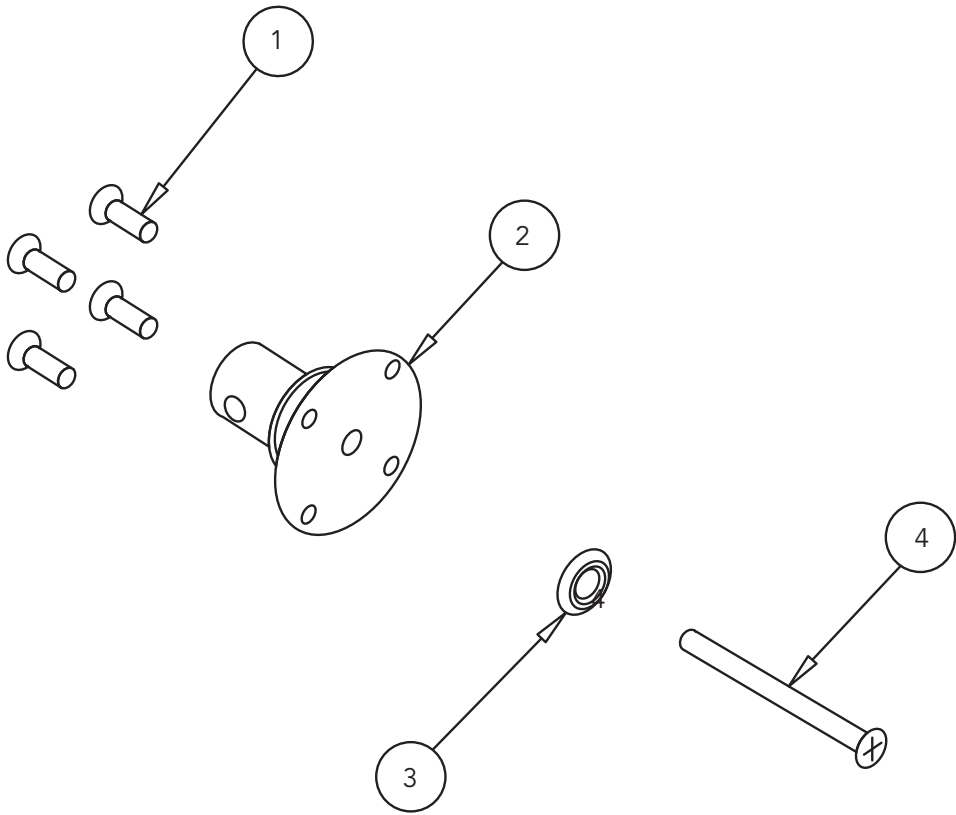
This Function Discontinued May 1, 2025. Please Contact the Factory for Parts Availability.

Item	Part Number	Description	Quantity
1	01-2201	Wood Screw #4 x 1/2"	4
	01-3337	Machine Screw #4-40 x 1/2"	
2	11-2495	Mounting Flange Assembly	1
3	*01-0225	Cup Washer	1
4	*01-4373	Countersunk Flat Head Screw 1/4-20 x 2-3/4"	1

* Specify Finish

Notes:

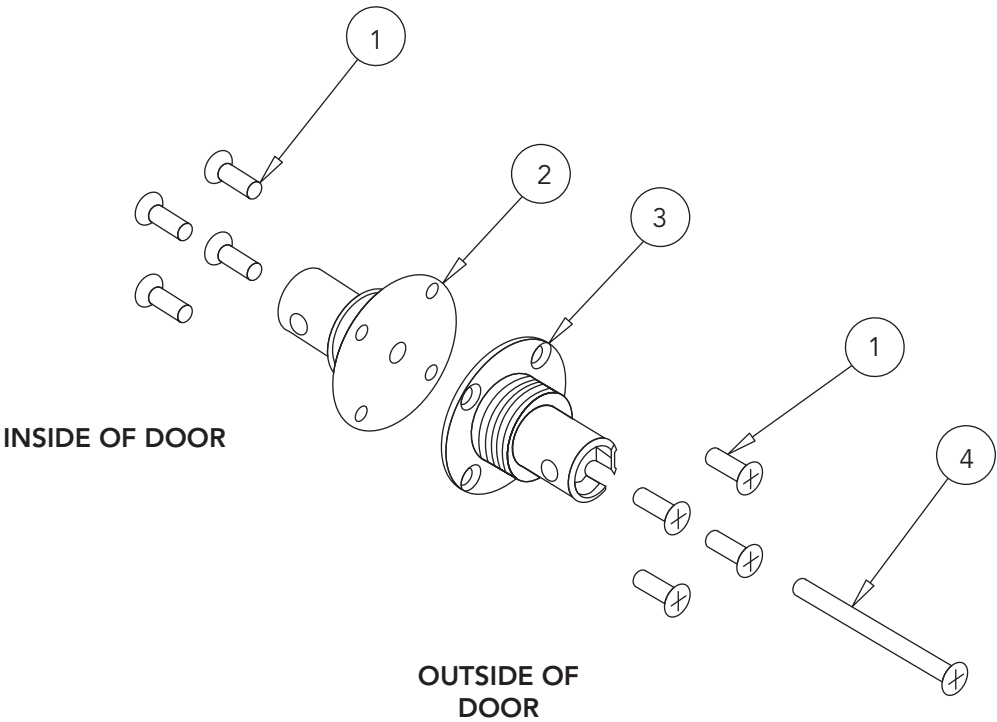
- Part numbers listed are for 1-3/4" thick doors. Consult factory for part numbers associated with non-standard doors.
- For lever and rose options, see pages 27-28.



This Function Discontinued May 1, 2025. Please Contact the Factory for Parts Availability.

Item	Part Number	Description	Quantity
1	01-2201	Wood Screw #4 x 1/2"	8
	01-3337	Machine Screw #4-40 x 1/2"	
2	11-2495	Inside Mounting Flange Assembly	1
3	11-2496	Outside Mounting Flange Assembly	1
4	01-4373	Countersunk Flat Head Screw 1/4-20 x 2-3/4"	1

- Notes:
- Part numbers listed are for 1-3/4" thick doors. Consult factory for part numbers associated with non-standard doors.
 - For lever and rose options, see pages 27-28.



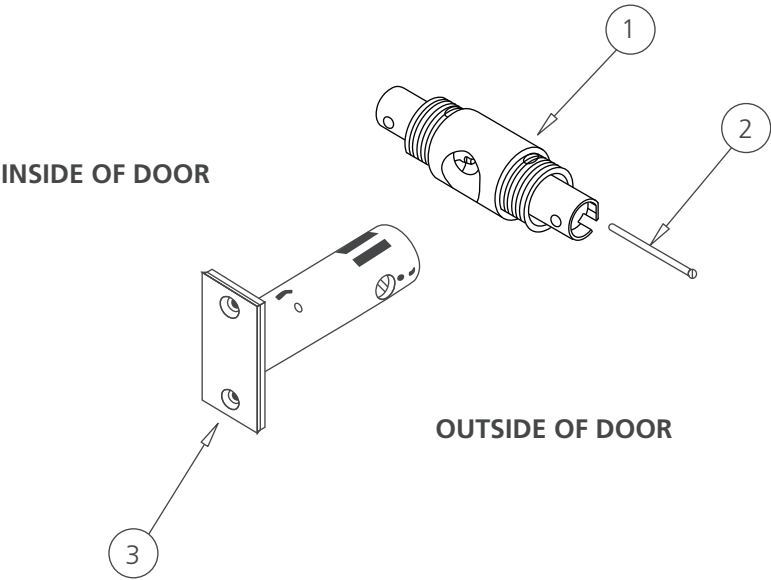
This Function Discontinued May 1, 2025. Please Contact the Factory for Parts Availability.

Item	Part Number	Description	Quantity
1	11-2501	Tube Assembly	1
2	11-0394	Aligning Pin	1
3	*11-2112	Latch Assembly	1

* Specify Finish

Notes:

- Part numbers listed are for 1-3/4" thick doors. Consult factory for part numbers associated with non-standard doors.
- Part numbers listed are for standard latch configurations. For other options, see page 24.
- For lever and rose options, see pages 27-28.



SLEEVE ASSEMBLIES

Select Functions (Highlighted) Discontinued May 1, 2025.
Please Contact the Factory for Parts Availability.

SARGENT®
ASSA ABLOY

Standard Cylinder Functions

Part Number	Lock Function														
	04	05	13	15	15-3	16	17	24	30	37	38	44	50	54	65
11-2009	O/S	O/S				O/S						O/S			
11-2010			O/S												
11-2011						I/S					I/S				
11-2012							O/S								
11-2013							I/S								
11-2014									O/S	O/S					
11-2015									I/S						
11-2016													O/S		
11-2017											O/S			O/S	
11-2055															O/S
11-2909								O/S							
11-2151	I/S		I/S												
11-2152*		I/S													
11-2153				I/S - O/S	I/S					I/S					
11-2154*												I/S			
11-2155*													I/S		
11-2156*														I/S	I/S
11-2157*								I/S							

* Specify Finish

Standard Cylinder Functions - 3/4" Throw Latch (41- Option)

Part Number	Lock Function					
	04	05	15	15-3	16	37
11-2028	O/S	O/S			O/S	
11-2029					I/S	
11-2030						O/S
11-2166	I/S					
11-2167*		I/S				
11-2168			I/S - O/S	I/S		I/S

* Specify Finish

LFIC (60- Option) and SFIC (70- Option) Functions Including Schlage® (SF- Option) and ASSA ABLOY ACCENTRA® (YRC- Option)

Part Number	Lock Function									
	04	05	16	17	24	30	37	38	44	54
11-2031	O/S	O/S	O/S						O/S	
11-2032			I/S					I/S		
11-2033				O/S						
11-2034				I/S						
11-2035						O/S	O/S			
11-2036						I/S				
11-2037								O/S		O/S
11-2911					O/S					

Note: Part numbers listed are for 1-3/4" thick doors. Consult factory for part numbers associated with non-standard doors.

The warranty on SARGENT® products becomes void if the product is modified in any way, regardless of whether the modification causes or contributes to any alleged defect. If a SARGENT product is modified it may no longer meet industry certification and quality control standards applicable to the original product and is no longer a genuine SARGENT product.

Copyright © 2018-2025 Sargent Manufacturing Company, an ASSA ABLOY Group company. All rights reserved. Reproduction in whole or in part without the express written permission of Sargent Manufacturing Company is prohibited.

Select Functions (Highlighted) Discontinued May 1, 2025. Please Contact the Factory for Parts Availability.

KESO (82- Option)

Part Number	Lock Function									
	04	05	16	17	24	30	37	38	44	54
11-2069	O/S	O/S	O/S						O/S	
11-2070			I/S					I/S		
11-2071				O/S						
11-2072				I/S						
11-2073						O/S	O/S			
11-2074						I/S				
11-2075								O/S		O/S
11-2915					O/S					

ASSA V-10 (VC- Option)

Part Number	Lock Function									
	04	05	16	17	24	30	37	38	44	54
11-2039	O/S	O/S	O/S						O/S	
11-2040			I/S					I/S		
11-2041				O/S						
11-2042				I/S						
11-2043						O/S	O/S			
11-2044						I/S				
11-2045								O/S		O/S
11-2913					O/S					

Sleeve Assembly Color Coding

Selected sleeves are color coded for easy identification.

	Lock Functions			
Red	04	05	16	44
Green	38	54		
Blue	65			
Yellow	24			

Note: Part numbers listed are for 1-3/4" thick doors. Consult factory for part numbers associated with non-standard doors.

SL- Option Discontinued May 1, 2025. Please Contact the Factory for Parts Availability.

SL- Option Standard Cylinder Functions

Part Number	Lock Function														
	04	05	13	15	15-3	16	17	24	30	37	38	44	50	54	65
11-2597	O/S	O/S				O/S		O/S				O/S			
11-2598						I/S					I/S				
11-2599							O/S								
11-2600							I/S								
11-2601									O/S	O/S					
11-2602									I/S						
11-2603													O/S		
11-2604											O/S			O/S	

SL- Option Standard Cylinder Functions - 3/4" Throw Latch (41- Option)

Part Number	Lock Function					
	04	05	15	15-3	16	37
11-2614	O/S	O/S			O/S	
11-2615					I/S	
11-2616						O/S

SL- Option LFIC (SL-60- Option) and SFIC (SL-70- Option) Functions Including Schlage® (SL-SF- Option)

Part Number	Lock Function								
	04	05	16	17	24	30	37	38	44
11-2617	O/S	O/S	O/S		O/S				O/S
11-2618			I/S					I/S	
11-2619				O/S					
11-2620				I/S					
11-2621						O/S	O/S		
11-2622						I/S			
11-2623								O/S	O/S

SL- Option KESO (SL-82- Option)

Part Number	Lock Function									
	04	05	16	17	24	30	37	38	44	54
11-2653	O/S	O/S	O/S		O/S				O/S	
11-2654			I/S					I/S		
11-2655				O/S						
11-2656				I/S						
11-2657						O/S	O/S			
11-2658						I/S				
11-2659								O/S		O/S

SL- Option ASSA V-10 (SL-VC- Option)

Part Number	Lock Function									
	04	05	16	17	24	30	37	38	44	54
11-2635	O/S	O/S	O/S		O/S				O/S	
11-2636			I/S					I/S		
11-2637				O/S						
11-2638				I/S						
11-2639						O/S	O/S			
11-2640						I/S				
11-2641								O/S		O/S

Note: Part numbers listed are for 1-3/4" thick doors. Consult factory for part numbers associated with non-standard doors.

The warranty on SARGENT® products becomes void if the product is modified in any way, regardless of whether the modification causes or contributes to any alleged defect. If a SARGENT product is modified it may no longer meet industry certification and quality control standards applicable to the original product and is no longer a genuine SARGENT product.

Copyright © 2018-2025 Sargent Manufacturing Company, an ASSA ABLOY Group company. All rights reserved. Reproduction in whole or in part without the express written permission of Sargent Manufacturing Company is prohibited.

Bearing Assemblies

Part Number	Description
11-2004	Used with 2-1/4" -2-1/2" Thick Doors (31- Option)
11-2005	Used with 3/4" Throw Latch (41- Option)
11-2899	Standard

Select Functions (Highlighted) Discontinued May 1, 2025. Please Contact the Factory for Parts Availability.

Lock Body Assemblies

Description	Lock Function															
	04	05*	13	15	15-3	16	17	24*	30	37	38	44*	50*	54*	65	68*
Non Cylinder and Standard Cylinder	11-2294	11-2295	11-2296	11-2297	11-2298	11-2299	11-2300	11-2301	11-2303	11-2304	11-2311	11-2305	11-2306	11-2307	11-2308	11-2308
41- Option Non-Cylinder and Standard Cylinder	11-2337	11-2338		11-2339	11-2340	11-2341				11-2355						
LFIC and SFIC	11-2349	11-2350				11-2351	11-2352	11-2353	11-2354	11-2355	11-2361	11-2356		11-2358		
41- LFIC and SFIC	11-2380	11-2381				11-2382				11-2383						
82- KESO	11-2426	11-2427				11-2428	11-2429	11-2430	11-2431	11-2432	11-2433	11-2434		11-2435		
41-82-KESO	11-2585	11-2586				11-2587				11-2588						
VC- ASSA V10	11-2388	11-2389				11-2390	11-2391	11-2392	11-2393	11-2394	11-2395	11-2396		11-2397		
41-VC ASSA V10	11-2418	11-2419				11-2420				11-2421						
SL- Option Non Cylinder and Standard Cylinder	11-2672	11-2673				11-2674	11-2675	11-2676	11-2677	11-2678	11-2679	11-2680	11-2681	11-2682		
SL- Option, 41- Option Non-Cylinder and Standard Cylinder	11-2696	11-2697				11-2698				11-2699						
SL- Option LFIC	11-2700	11-2701				11-2702	11-2703	11-2704	11-2705	11-2706	11-2707	11-2708		11-2709		
SL- Option, 41- Option LFIC	11-2722	11-2723				11-2724				11-2725						
SL- Option SFIC	11-2775	11-2776				11-2777	11-2778	11-2779	11-2780	11-2781	11-2782	11-2783		11-2784		
SL- Option, 41- Option SFIC	11-2813	11-2814				11-2815				11-2816						
SL- Option KESO	11-2843	11-2844				11-2845	11-2846	11-2847	11-2848	11-2849	11-2850	11-2851		11-2854		
SL- Option, 41- Option KESO	11-2865	11-2866				11-2867				11-2868						
SL- Option VC- ASSA V10	11-2817	11-2818				11-2819	11-2820	11-2821	11-2822	11-2823	11-2824	11-2825		11-2826		
SL- Option, 31- Option, VC- ASSA V10	11-2829	11-2830				11-2831	11-2832	11-2833	11-2834	11-2835	11-2836	11-2837		11-2838		
SL- Option, 41- Option, VC- ASSA V10	11-2839	11-2840				11-2841				11-2842						

*Specify Finish

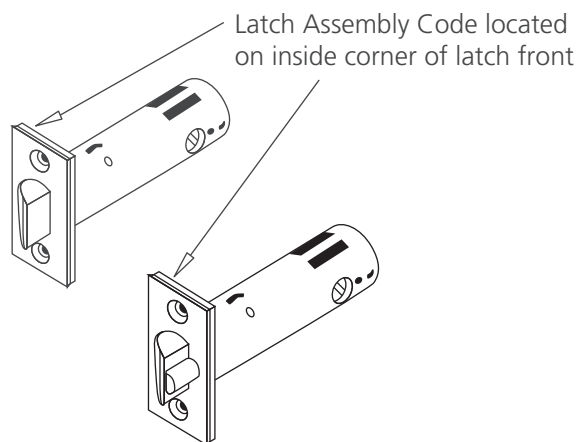
Note: Lockbody assemblies are shipped with bearing assembly, inside/outside sleeve, and inside/outside collar.

Note: Part numbers listed are for 1-3/4" thick doors. Consult factory for part numbers associated with non-standard doors.

Select Functions (Highlighted) Discontinued May 1, 2025. Please Contact the Factory for Parts Availability.

Part Number	Assembly Code	Lock Function																
		04	05	13	15	15-3	16	17	24	30	37	38	44	50	54	65	68	94-2
Standard 2-3/4" (70mm) Backset																		
11-2106	B	x	x	x		x	x	x		x	x	x						
11-2107	A				x													
11-2108	K								x									
11-2110	D												x	x	x			
11-2111	C															x	x	
11-2112	—																	x
23-option 3-3/4" (95mm) Backset																		
11-2113	B	x	x	x		x	x	x		x	x	x						
11-2114	A				x													
11-2115	K								x									
11-2117	D												x	x	x			
11-2118	C															x	x	
11-2119	—																	x
25-option 5" (127mm) Backset																		
11-2120	B	x	x	x		x	x	x		x	x	x						
11-2121	A				x													
11-2122	K								x									
11-2124	D												x	x	x			
11-2125	C															x	x	
11-2126	—																	x
41-option 3/4" (19mm) Throw																		
08-2517	—	x	x		x	x	x				x	x						

Note: Code letter stamped on inside corner of latch front identifies function(s) compatible with the latch assembly.
Specify Finish



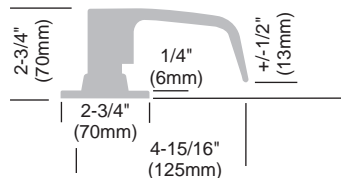
The warranty on SARGENT® products becomes void if the product is modified in any way, regardless of whether the modification causes or contributes to any alleged defect. If a SARGENT product is modified it may no longer meet industry certification and quality control standards applicable to the original product and is no longer a genuine SARGENT product.

Copyright © 2018-2025 Sargent Manufacturing Company, an ASSA ABLOY Group company. All rights reserved. Reproduction in whole or in part without the express written permission of Sargent Manufacturing Company is prohibited.

Lever & Rose Designs

OL Design

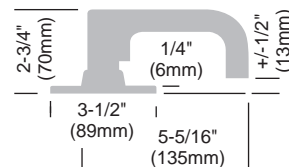
- Rose: O - Wrought
- Lever: L - Cast



Note: Any rose and lever on this page can be combined to suit individual taste

LJ Design

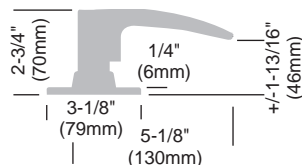
- Rose: L - Wrought
- Lever: J - Cast



Note: Lever projections shown are for 1-3/4" (44mm) doors and will vary by door thickness

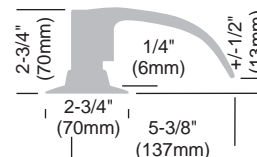
EB Design

- Rose: E - Wrought (Discontinued May 1, 2025)
- Lever: B - Cast



BP Design

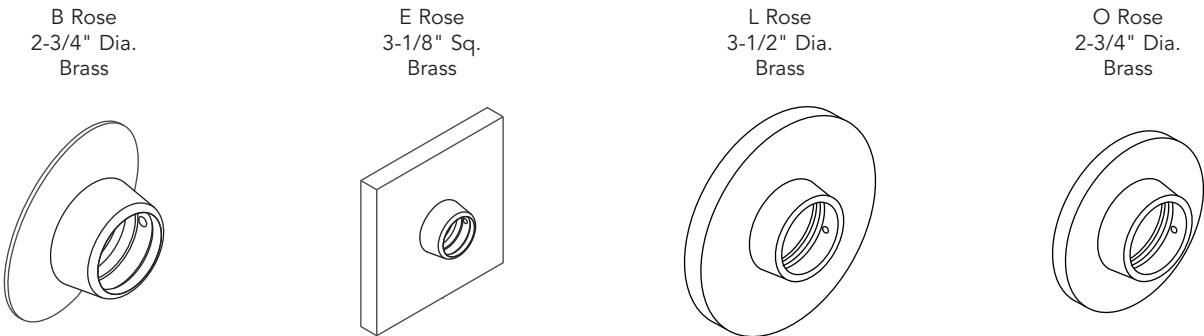
- Rose: B - Wrought (Discontinued May 1, 2025)
- Lever: P - Cast



Select Levers (Highlighted) Discontinued May 1, 2025. Please Contact the Factory for Parts Availability.

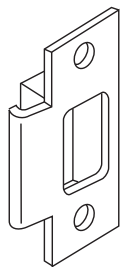
Levers	Plain	Std Cylinder, Button & Emergency Release	Sargent LFIC 60- Option	SFIC 70- Option	KESO 82- Option	Schlage® 30- Option	Schlage® SF- Option	ASSA V10 VC- Option	ASSA ABLOY ACCENTRA® 6 or 7 Pin YC- and YC- 7P- Options	ASSA ABLOY ACCENTRA® LFIC 6 Pin YRC-Option	ASSA ABLOY ACCENTRA® LFIC 7 Pin YRC-7P- Option
B	11-0061	11-0063	11-0064	11-0065	11-0068	11-0066		11-0067			
J	11-2558	11-2560	11-2561	11-2562	11-2565	11-2563		11-2564			
L	11-0041	11-0043	11-0044	11-0045	11-0048	11-0046	11-0399	11-0047	11-0441	11-0443	11-0445
P	11-0101	11-0103	11-0104	11-0105	11-0108	11-0106		11-0107	11-0447	11-0449	11-0451
SL-B		11-0317	11-0318	11-0319	11-0322	11-0320		11-0321			
SL-J		11-2869	11-2870	11-2871	11-2874	11-2872		11-2873			
SL-L		11-0301	11-0302	11-0303	11-0306	11-0304	11-0401	11-0305			
SL-P		11-0349	11-0350	11-0351	11-0354	11-0352		11-0353			

B & E Roses (Highlighted) Discontinued May 1, 2025. Please Contact the Factory for Parts Availability.



Part Number	Rose	Description
11-2445	B	Assembly for inside or outside of all functions except outside for 15-3, 93 and 94
11-2483	B	Assembly for outside of 15-3 function
11-2449	B	Assembly for inside or outside of 93 and 94 functions
11-2447	E	Assembly for inside or outside of all functions except outside for 15-3, 93, 94 and inside of 38 functions
11-2484	E	Assembly for outside of 15-3 function
11-2889	E	Assembly for inside of 38 function
11-2451	E	Assembly for inside or outside of 93 and 94 functions
11-2446	L	Assembly for inside or outside of all functions except outside for 15-3, 93, 94 and inside of 38 functions
11-2485	L	Assembly for outside of 15-3 function
11-2888	L	Assembly for inside of 38 function
11-2450	L	Assembly for inside or outside of 93 and 94 functions
11-2444	O	Assembly for inside or outside of all functions except outside for 15-3, 93, 94 and inside of 38 functions
11-2482	O	Assembly for outside of 15-3 function
11-2887	O	Assembly for inside of 38 function
11-2448	O	Assembly for inside or outside of 93 and 94 functions

Specify Finish


Curved Lip "T" Strike (Standard)

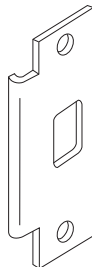
Brass, bronze or stainless steel.

2-3/4" (70mm) x 1-1/8" (29mm) x 1-1/4" (32mm) lip to center.

Optional lip lengths: 1" (25mm), 1-1/2" (38mm), 1-3/4" (44mm) and 2" (51mm).

To order separately, specify model no x finish.

Plastic strike box AM-0044 available separately.


**ANSI Curved Lip (Optional)
(28- Option)**

Brass, bronze or stainless steel.

4-7/8" (124mm) x 1-1/4" (32mm) x 1-1/4" (32mm) lip to center.

Optional lip lengths: 1-1/8" (29mm), 1-3/8" (35mm), 1-5/8" (42mm), 1-7/8" (48mm), 2-1/8" (54mm), 2-3/8" (60mm), 2-5/8" (66mm), 2-7/8" (73mm)

To order separately, specify model no x finish.

Strike box 77-1141 available separately.


ANSI Wrought Strike Box

Used with ANSI curved lip strike.

To order separately, specify 77-1141.

Strikes - 2-3/4" T-Curved Lip* (Standard)

Model No.	Description
800 x 1"	1" Lip Length
800 x 1-1/4"	1-1/4" Lip Length
800 x 1-1/2"	1-1/2" Lip Length
800 x 1-3/4"	1-3/4" Lip Length
800 x 2"	2" Lip Length

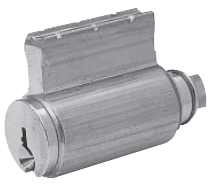


Strike Box

Model No.	Description
77-1141	4-7/8" ANSI wrought strike box
AM-0044	Plastic strike box for T-strike

Strikes - 4-7/8" ANSI Curved Lip* (28- Option)

Model No.	Description
808 x 1-1/8"	1-1/8" Lip Length
808 x 1-1/4"	1-1/4" Lip Length
808 x 1-3/8"	1-3/8" Lip Length
808 x 1-5/8"	1-5/8" Lip Length
808 x 1-7/8"	1-7/8" Lip Length
808 x 2-1/8"	2-1/8" Lip Length
808 x 2-3/8"	2-3/8" Lip Length
808 x 2-5/8"	2-5/8" Lip Length
808 x 2-7/8"	2-7/8" Lip Length

*Specify Finish

		
Brass, 6-pin 2 nickel silver keys Finishes: 04, 15, BSP	Brass, 6-pin 2 nickel silver keys Finishes: 04, 15, BSP	Brass, 6-pin 2 nickel silver keys Finishes: 04, 15, BSP

Type	Pins	Standard Cylinder	Hotel Cylinder	Interchangeable Core^	
				Large Format	Small Format
Conventional	6	C11-1	C11-2	6300	7300B
	7	N/A	N/A	N/A	7P-7300B
Signature	6	10-C11-1	N/A	10-6300	N/A
XC	6	11-C11-1	N/A	11-6300	N/A
	7	N/A	N/A	N/A	11-7P-7300B
Degree® DG1	6	DG1-C11-1	DG1-C11-2	DG1-6300	N/A
Degree® DG2	6	DG2-C11-1	N/A	DG2-6300	N/A
Degree® DG3	6	DG3-C11-1	N/A	DG3-6300	N/A

^ Locks will be provided with the applicable tailpiece per the type interchangeable and/or removable core being used.

Cylinder Parts

Part #	Description
C11-3	Emergency Release Cylinder (65)

Tailpieces and Tailpiece Packs

Part Number	Description
11-3007	Cylinder tailpiece pack for SF- option Schlage® LFIC
11-0171	Cylinder tailpiece - SFIC 6 pin
11-0172	Cylinder tailpiece - SFIC 7 pin, LFIC 6 Pin
11-0276	Cylinder tailpiece pack for 11- SFIC 7 pin
11-2578	Cylinder tailpiece pack for 30- option Schlage® fixed core
11-5003	Cylinder tailpiece and retainer pack, DG/XC LFIC
11-5004	Cylinder spacer for ASSA ABLOY ACCENTRA® 6 pin fixed core cylinder
11-5005	Cylinder tailpiece pack for ASSA ABLOY ACCENTRA® 6 or 7 pin LFIC
13-1385	Cylinder tailpiece - adapts 10L cylinder to 11L

Screws and Screw Packs

Part Number*	Description
01-1018	Countersunk flat head screw 10-24 x 1/2" (2" Dr)
01-1027	Countersunk flat head screw 10-24 x 3/8" (1-3/4" Dr)
01-1316	Spanner set screw - for lever only (bit size #6)
01-1426	6-Lobe security set screw for lever only 1/4-28 x .1675 (bit size T-20)
01-2201	Wood screw #4 x 1/2"
01-3337	Machine screw #4-40 x 1/2"
01-4373	Countersunk flat head security screw 1/4-20 x 2-3/4"
01-5000	Countersunk flat head security screw 8-32 x 3/4"
01-5001	Subfront screws (6010 kit)
01-9109	Machine screw #6-32 x 3/8"
11-2520	Screw pack
11-2521	Screw pack for 93 and 94 functions
11-2522	Screw pack for 36- option
11-2523	Screw pack for 36- option for 93 and 94 functions
11-2526	Screw pack for 28- option
11-2527	Screw pack for 28-36- option
11-2528	Screw pack for 28-37- option
11-2529	Screw pack for 41- option
11-2530	Screw pack for 41-36- option
11-2531	Screw pack for 41-37- option
82-3855	6-Lobe bit pack - includes 6 bits, sizes T8, T9, T10, T15, T20, T25, T27
82-3856	Spanner bit pack - includes 6 bits, sizes 4, 6, 8, 10, 12, 1/4"

Misc Parts

Part Number	Description
01-0225*	Cup washer
01-4530	6-Lobe security tool (Torx™) to assemble lever set screw
08-0562	Subfront (6010 kit)
11-0031	Collar inside
11-0032	Collar outside
11-0138	Installation wrench to assemble rose and collars
11-0174	Anchor plate
11-0263	Threaded plunger, SL- option
11-0266	Screwdriver
11-0394	Aligning pin, standard
11-0396	Aligning pin, 2-1/4" door
11-0397	Aligning pin, 2-1/2" door
11-2263*	Thumbturn, 68 function
11-2495	Mounting flange assembly for 93 and 94 functions
11-2496	Mounting flange assembly for 94 function
11-2501	Tube assembly for 94-2 function
11-4068	Lever catch assembly with screw, standard
11-4069	Lever catch assembly with screw, SL- option
14-0057	Emergency key privacy function only
14-0299	Lockout key for 50 function

01-4530 6 Lobe Security Tool (T-20)



11-0138 Installation Wrench



14-0299 Lockout Key



* Specify finish

The warranty on SARGENT® products becomes void if the product is modified in any way, regardless of whether the modification causes or contributes to any alleged defect. If a SARGENT product is modified it may no longer meet industry certification and quality control standards applicable to the original product and is no longer a genuine SARGENT product.

Copyright © 2018-2025 Sargent Manufacturing Company, an ASSA ABLOY Group company. All rights reserved. Reproduction in whole or in part without the express written permission of Sargent Manufacturing Company is prohibited.

The ASSA ABLOY Group is the global leader in access solutions. Every day, we help billions of people experience a more open world.

ASSA ABLOY Opening Solutions leads the development within door openings and products for access solutions in homes, businesses and institutions. Our offering includes doors, frames, door and window hardware, mechanical and smart locks, access control and service.

SARGENT®
ASSA ABLOY

SARGENT Manufacturing Company
100 Sargent Drive
New Haven, CT 06511 USA
800-727-5477
www.sargentlock.com

Founded in the early 1800s, SARGENT® is a market leader in locksets, cylinders, door closers, exit devices, electro-mechanical products and access control systems for new construction, renovation, and replacement applications. The company's customer base includes commercial construction, institutional, and industrial markets.

Copyright © 2018-2025, SARGENT Manufacturing Company. All rights reserved. Reproduction in whole or in part without the express written permission of SARGENT Manufacturing Company is prohibited. Patent pending and/or patent www.assaabloydss.com/patents.