

4900 Series - Mullions

Hager 4900 Series offers both a keyed removable mullion and a non-keyed removable mullion. Both are designed for use on double door openings with 4500, 4600 and 4700 Series Rim devices providing increased security and tighter closure, while providing easy adaptation for full width access. Our 4900 Series Mullions sets include a mullion tube, top and bottom brackets, and fasteners. Fire-rated mullions are UL listed for 3 hours on fire-rated pairs of doors up to 8 feet by 8 feet.



4900 Series - How To Order

4900 SERIES MULLION SETS

4900

U

F

84"

USP

Type

- X - Keyed Removable Mullion
- U - Non-Keyed Removable Mullion

Fire Rating

- F - Fire Rated
- 0 - Non-Fire Rated

Size

- 84"
- 96"
- 10' (120")

Finish

- USP

Product Group

4900 Series, Mullions

Notes:

1. Keyed removable mullion requires 3901 rim cylinder (sold separately).
2. Fire rated strike and hook kits sold separately (4912 for use with 4500 Series fire-rated exit device and mullion or 4916 for use with 4700 Series fire-rated exit device and mullion).
3. Stabilizer kit 4953 (sold separately).

4900 Series - Keyed Removable Mullion

WARRANTY | One-year warranty

SPECIFICATIONS

Certification:	UL/cUL listed for fire-rated doors up to 8' (2438 mm) x 8' (2438 mm)
Cylinders:	<ul style="list-style-type: none"> • Solid brass 6-pin rim cylinders (3901, sold separately) • Standard core, C keyway - Standard • Small Format Interchangeable Core available (sold separately)
Mullion:	2" x 3" (51 mm x 76 mm) – 11 gauge steel tube
Fasteners:	<ul style="list-style-type: none"> • Four (4) each 5/16" - 18 x 5/8" FHPMS (top bracket) • Two (2) each 5/16" - 18 x 1-1/2" FHPMS (top bracket) • Four (4) each 5/16" - 18 - 1-1/2" FHMS (bottom bracket) • Four (4) 5/16" - 18 masonry anchors (bottom bracket) • Two (2) 1/4" - 20 x 1-1/4" FPHMS (top fitting) • Two (2) 1/4" - 20 thru bolts (top fitting) • Two (2) #10 - 24 x 3/8" FHPMS (top fitting) • Fire-rated device - 5/16" - 18 x 1-1/4" FHMS
Shims:	<ul style="list-style-type: none"> • Two (2) each 1/2" (13 mm) and 5/8" (16 mm) spacers included (top) • Two (2) 3/32 (2.4 mm) shims included (bottom)
Strikes:	<ul style="list-style-type: none"> • Panic-rated mullions use standard Rim strike supplied with exit device • Fire-rated strike and hook kit 4912 (4500 or 4600 Series) or 4916 (4700 Series) must be purchased separately
Top Fitting:	<ul style="list-style-type: none"> • Latching head allows the mullion to be removed in seconds • Mullion can be locked in place without the use of a key

FINISHES | USP - grey primer only

4900X

Mullion Set

Certification:	Panic-rated
Opening Height:	84" (2134 mm), 96" (2438 mm), 120" (3048 mm)
Material:	11 gauge steel tube



4900XF

Fire-Rated Mullion Set

Certification:	UL fire-rated
Opening Height:	84" (2134 mm), 96" (2438 mm)
Material:	11 gauge steel tube

4900 Series - Non-Keyed Removable Mullion

WARRANTY | One-year warranty

SPECIFICATIONS

Certification:	UL/cUL Listed for fire-rated pairs of doors up to 8' (2438 mm) X 8' (2438 mm)
Mullion:	<ul style="list-style-type: none"> • 2" x 3" (51 mm x 76 mm) – 11 gauge steel tube • Mullion easily removed by loosening top and bottom screws
Fasteners:	<ul style="list-style-type: none"> • Four (4) each 5/16" - 18 x 5/8" FHPMS (top bracket) • Two (2) each 5/16" - 18 x 1-1/2" FHPMS (top bracket) • Four (4) each 5/16" - 18 x 1-1/2" FHMS (bottom bracket) • Four (4) each 5/16" - 18 masonry anchors (5/8" diameter x 7/8" long) (bottom bracket) • Two (2) each 1/4" - 20 x 1-1/4" FHPMS (top fitting) • Two (2) each 1/4" - 20 thru bolts (top fitting) • Two (2) #10 - 24 x 3/8" FHPMS (top fitting) • One (1) 1/4 - 20 x 3/16" set screw (top fitting) • Fire-rated device - 5/16" - 18 x 1-1/4" FHMS,
Shims:	<ul style="list-style-type: none"> • Two (2) each 1/2" (13 mm) and 5/8" (16 mm) spacers included (top) • Two (2) 1/16" (1.6 mm) shims included (bottom)
Strikes:	<ul style="list-style-type: none"> • Panic-rated mullions use standard Rim strike supplied with exit device • Fire-rated strike and hook kit 4912 (4500 or 4600 Series) or 4916 (4700 Series) must be purchased separately

FINISHES | USP - grey primer only

4900U

Non-Keyed Removable Mullion Set

Certification: Panic-rated
 Opening Height: 84" (2134 mm),
 96" (2438 mm),
 120" (3048 mm)
 Material: 11 gauge steel tube

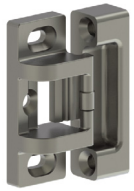


4900UF

Fire-Rated Non-Keyed Removable Mullion Set

Certification: UL fire-rated*
 Opening Height: 84" (2134 mm),
 96" (2438 mm),
 Material: 11 gauge stainless steel tube

4900 Series - Strikes and Stabilizer Kit

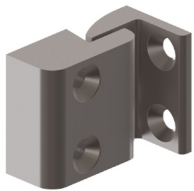


4912
Fire-Rated Strike and Hook Kit for 4500 and 4600 Series
 Finishes: US32D
 Notes: Must order for use with fire-rated mullion and fire-rated Rim devices to ensure fire rating



4916
Fire-Rated Strike and Hook Kit for 4700 Series
 Finishes: US32D
 Notes:

- Must order for use with fire-rated mullion and fire-rated Rim devices to ensure fire rating



4953
Mullion Stabilizer Kit
 Finishes: US32D
 Notes: For use with mullion and exit devices for added security

4900 Series - 4900T - Accessories



4903
Top/Bottom Bracket Set
 Certification: Non-fire-rated
 Function: Keyed removable
 Materials: Steel
 Cylinder: Rim cylinder, 3901, sold separately



4903XF
Fire-Rated Top/Bottom Bracket Set
 Certification: Fire-rated
 Function: Keyed removable
 Materials: Steel
 Cylinder: Rim cylinder, 3901, sold separately

4900X - CYLINDER



3901
Rim Cylinder
 Conventional cylinder and Small Format Interchangeable Core sold separately. For more cylinder information, please refer to Cylinder, Core & Keying in the Lock section of this catalog.