

### MOUNTING INFORMATION

Sex nuts or through bolts are required for wood and plastic covered composite doors, and any type of door without reinforcements and recommended for wood core and metal clad (Kalamein) type doors.

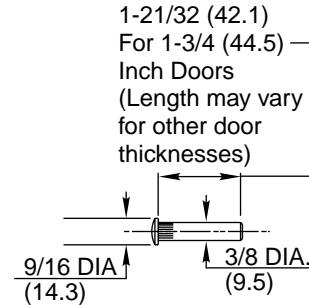
RH SHOWN  
LH OPPOSITE

**CAUTION:** CLOSER TO BE INSTALLED IN A TRUE HORIZONTAL POSITION TO ENSURE PROPER CLOSER PERFORMANCE.

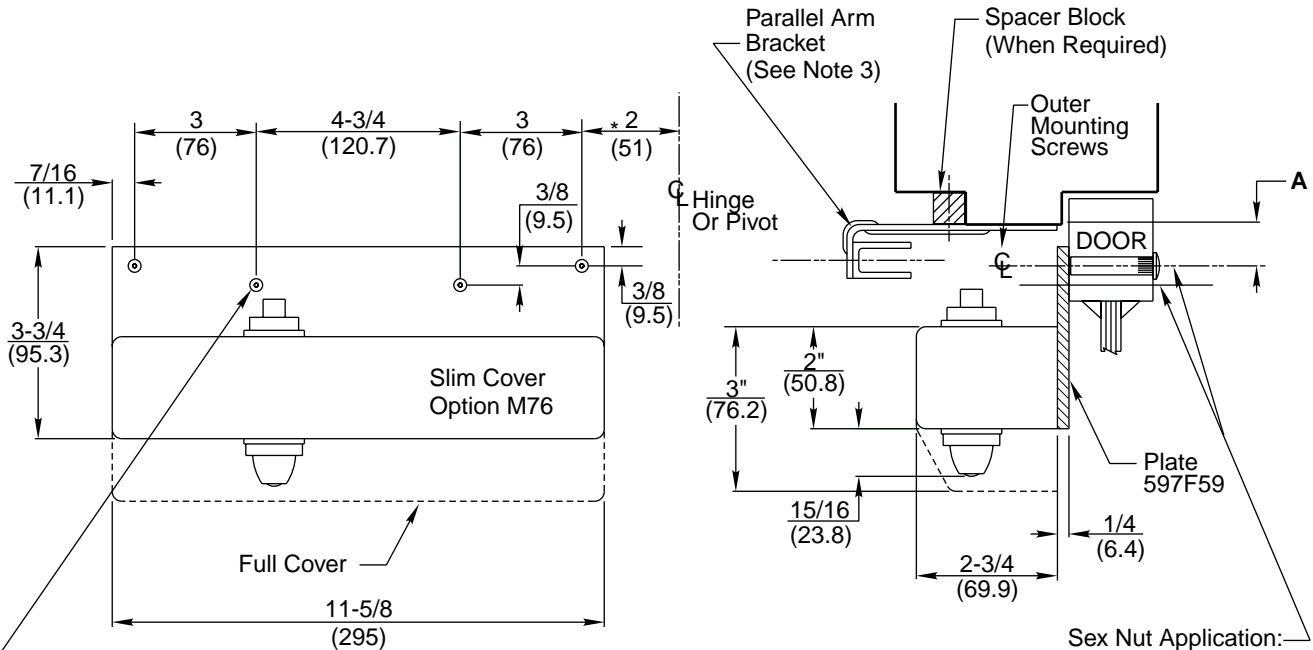
#### NOTES:

1. Dimensions given in inches and (mm).
2. To obtain extra closing force, add 3" (76.2) to dimensions marked by asterisk (\*). This will limit degree of door opening to 110°.
3. Parallel arm bracket may be mounted on stop as shown or rabbet, refer to template T30713 for mounting dimensions.
4. Dimensions marked (\*) apply to centerline of hinge/pivot for butt, swing clear, offset and center hung pivots.

COVER	PLATE	"A" Dim.
Full (Std.)	597F58	1-1/4 (32)
Slim (Opt. M76)	188F65	13/16 (21)



**SEX NUT DETAIL**



1/4-20 Tap For Machine Screw Or Drill For #14 Wood Screw (4 Places)

Sex Nut Application: 9/32 Dia (7.1) Thru Clearance For 1/4-20 Machine Screw (4 Places)

Sex Nut Application: Enlarge To 3/8 Dia. This Side Only (4 Places)

### RESPONSIBILITY

Door and Frame Manufacturers are responsible for providing adequate construction or reinforcements for proper installation of hardware shown. All architectural builders hardware must be installed on properly reinforced doors and frames, regardless of the type, material, or method of construction.

DC6210 Series with 597F58/188F65  
DC6410 Series with 597F58/188F65  
Surface Door Closer  
Parallel Arm Mounting By Plate  
(with or without A1)

**Corbin Russwin**®

www.corbinrusswin.com

Do Not Scale Drawing

Supersedes

Dr.

App.

Date

03-04

Template Number

T30708