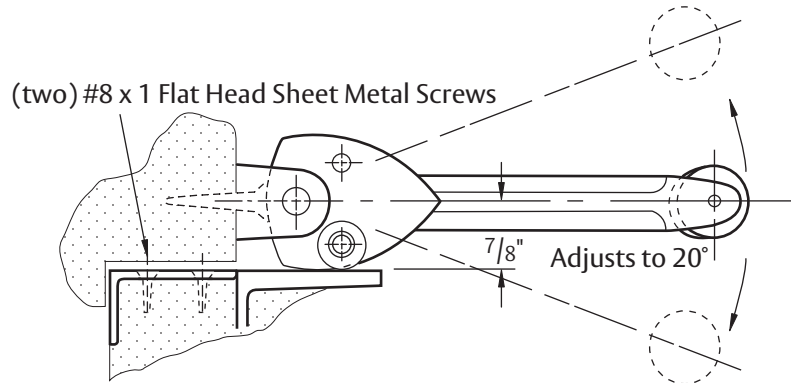


ROCKWOOD®

The global leader in
door opening solutions

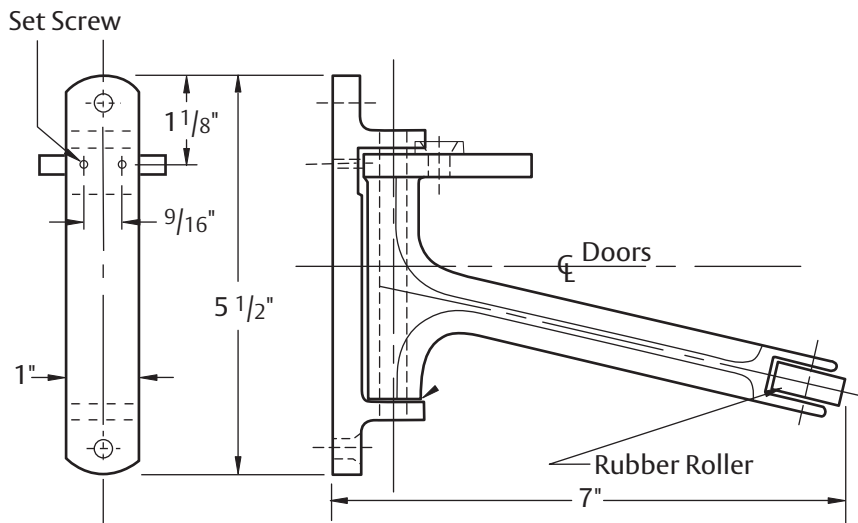
NOT TO SCALE



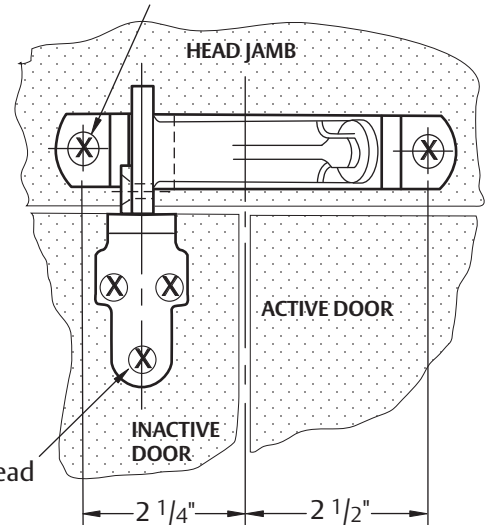
Template T-576

Effective date: July 23, 2015
Supersedes: All Previous

NOTE: Rockwood reserves the right to make product changes and is not responsible for obsolete template errors. To ensure your template is current, please visit our website at www.rockwoodmfg.com or call us at 800-458-2424



(two) #10 x 1 Oval Head Wood Screws or Machine Screws



(three) #8 x 1 Flat Head Sheet Metal Screws Apply After Adjust.

