

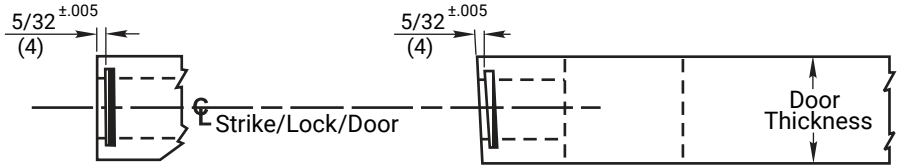
NOTES:

- Backset is measured from centerline of bevel which is the centerpoint of the door thickness.
- Door prep with 2-3/4" (70) backset meets ANSI/BHMA A156.115 for steel doors and A156.115W for wood doors plus through bolt holes shown.
- Dimensions given in inches and (mm).
- 1-1/4" strike lip suits frame for 1-3/4" thick door.

| TEMPLATE CROSS REFERENCE | |
|--------------------------|-----------|
| DESCRIPTION | TEMPLATE |
| 371 T Strike | 7102-0005 |
| 70S Full Lip Strike | 7102-0006 |

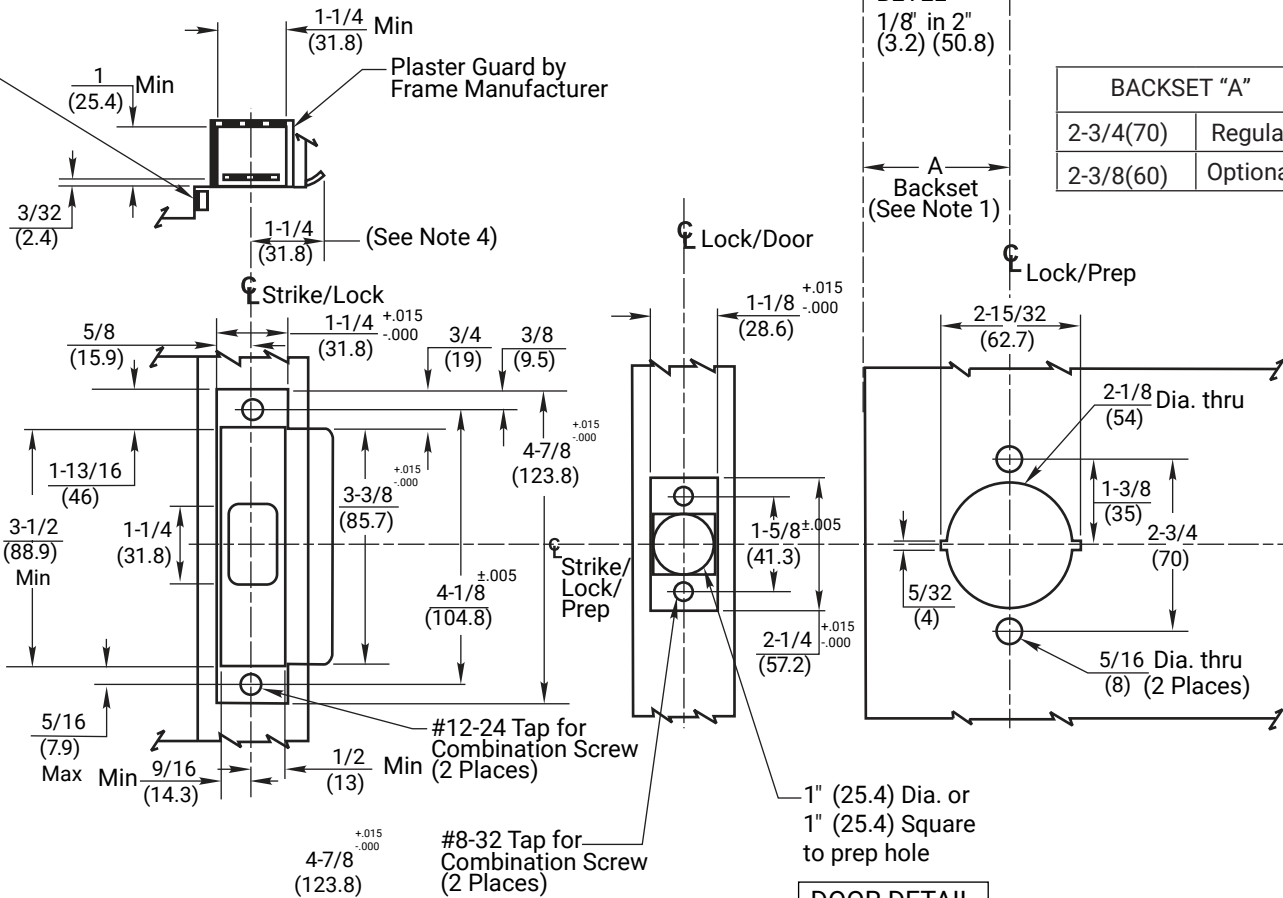
SQUARE EDGE

BEVELED EDGE



CAUTION: DOOR AND FRAME MANUFACTURER

When door gasketing or silencers are used, proper allowances must be made for strike location to maintain a common centerline with lock and door as shown so that bolt will freely enter strike.



| BACKSET "A" | |
|-------------|----------|
| 2-3/4(70) | Regular |
| 2-3/8(60) | Optional |

DOOR DETAIL

| FRAME DETAIL |
|--------------------------------------|
| ANSI Strike (Regularly Furnished) |

| TOLERANCES | |
|------------|--------|
| Inches | (mm) |
| .005 | (.127) |
| .015 | (.381) |

RESPONSIBILITY
DOOR AND FRAME MANUFACTURERS ARE RESPONSIBLE FOR PROVIDING ADEQUATE CONSTRUCTION OR REINFORCEMENTS FOR PROPER INSTALLATION OF HARDWARE SHOWN. ALL ARCHITECTURAL BUILDERS HARDWARE MUST BE INSTALLED ON PROPERLY REINFORCED DOORS AND FRAMES, REGARDLESS OF TYPE, MATERIAL, OR METHOD OF CONSTRUCTION.

YPL Series Indicator Lock
2-3/8" and 2-3/4" Backsets
HM or WD Doors

1-855-557-5078 Ext. 2
www.accentra-assaabloy.com

ACCENTRA
ASSA ABLOY

Experience a safer
and more open world

Copyright © 2022, 2023, 2024, ASSA ABLOY Access and Egress Hardware Group, Inc. All rights reserved. Reproduction in whole or in part without the express written permission of ASSA ABLOY Access and Egress Hardware Group, Inc. is prohibited.

| | | | |
|-----------------|-----------|----------------------|--------|
| SUPERSEDES | 08/22 | DO NOT SCALE DRAWING | |
| TEMPLATE NUMBER | 7150-0124 | SHEET | 1 of 1 |
| | | DATE | 05/24 |